

The Engineer's Tool Kit

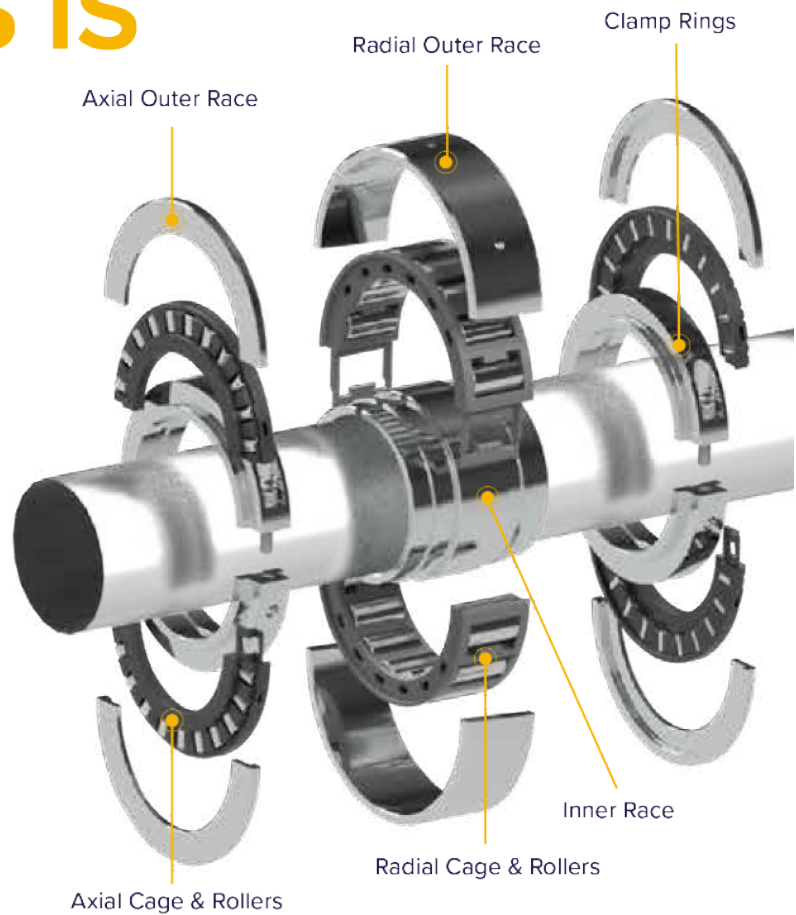


Essential
INDUSTRIAL SERVICES LTD

THE FUTURE OF SPLIT BEARINGS IS HERE



2 Year Warranty
Parts and Labour



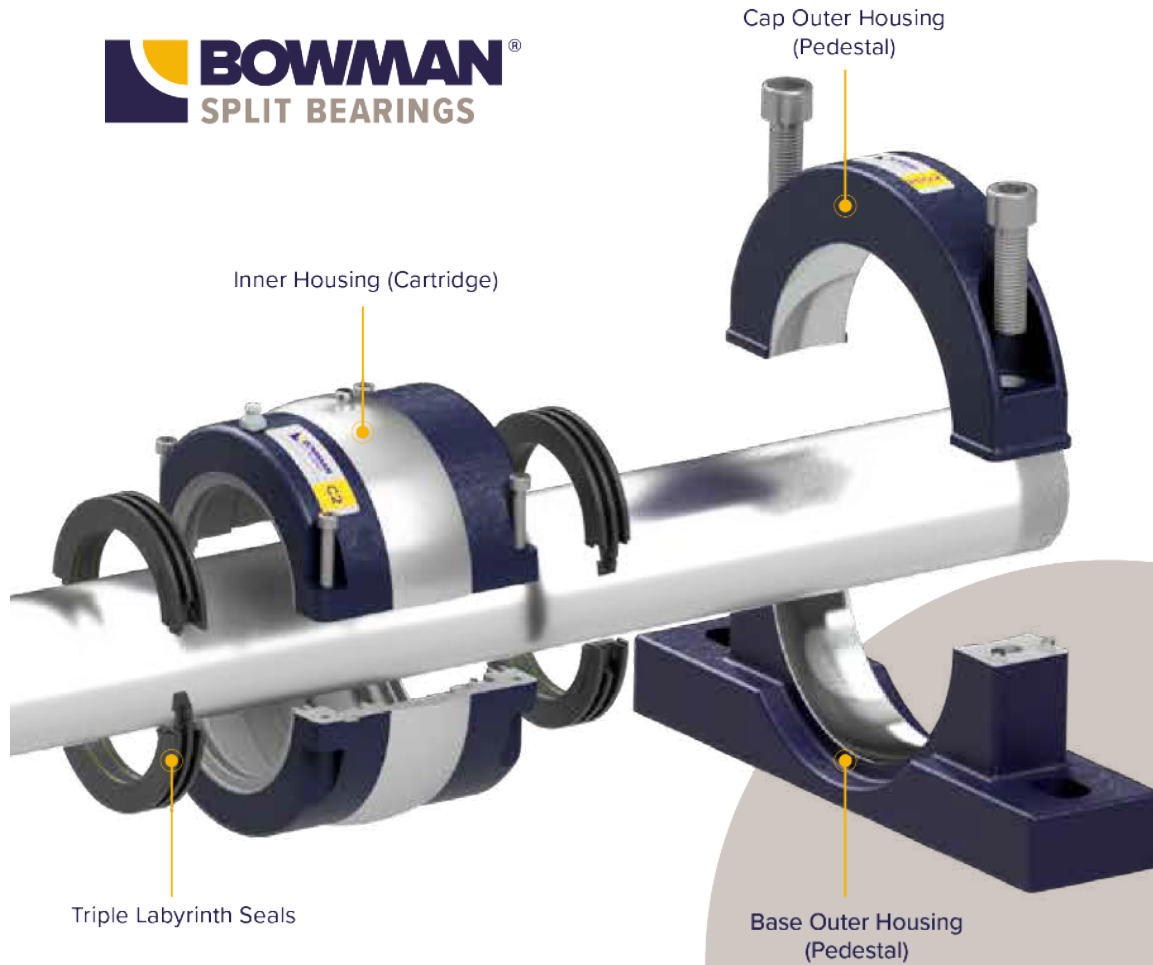
ADVANCED SPHERICAL SPLIT ROLLER BEARINGS

Dramatically Reduced Downtime

Advanced Spherical Split Roller Bearing kits drop directly into the existing SN, SAF, SNL and SD housings. This has revolutionised the replacement of industrial and marine units as it allows the bearings to be replaced without having to remove the shaft or surrounding equipment.



Design and Manufactured in the UK



ADVANCED SPLIT ROLLER BEARINGS

Up to 75% Higher Radial Load Capacity and Up to a 1000% Increase in Axial Load Capacity in Both Directions

- ▶ Dramatically reduced downtime
- ▶ The axial bearing design enables calculation of L10 life
- ▶ Stronger ductile (SG) cartridges and pedestals as standard
- ▶ Direct interchange with existing manufacturers outer housing
- ▶ Different Mounting Options
- ▶ Metric and Imperial Sizes
- ▶ Adaptions of the design can be accomdated
- ▶ Special extended seals are available which overcome worn shafts



OPTIBELT
POWER TRANSMISSION



EXPECT MORE

...FROM YOUR BELT DRIVES



25,000 Hours

- Design life of our V-belts.
That's \approx 6 years! (14hr/6 day)

Maintenance-Free

- Our optibelt **RED POWER 3** belts

Optibelt (UK) • 01925 415777 • info@optibelt.co.uk • www.optibelt.com

Optibelt have been manufacturing transmission belts in Germany since 1948 and today are market leaders in belt technology. Our belts are made in our own European factories using in-house developed processes and advanced materials. The result is a range of belts which outperform other brands and deliver substantial cost savings and productivity improvements to our customers.



OPTIBELT V-BELT PRODUCT RANGE

25,000 hours design life – That's \approx 3 years running 24/7 or over 6 years running 12h/6d/wk.

Optibelt V-belts are designed to outlast other brands. While 25,000 hours is a theoretical value assuming correct fitting and running conditions, it is a realistic and useful benchmark. Belt life significantly less than this indicates that improvements can be achieved.

Contact Optibelt via your local IADA branch for expert advice.



optibelt SK – Premium quality, standard wrapped construction

High quality materials and advanced production processes result in a high performance, low stretch belt with extremely consistent properties allowing predictable and extended maintenance schedules with outstanding reliability and efficiency.

- **S=C Plus** precise length tolerance exceeds ISO set requirements so belts can be combined in sets without matching.



optibelt RED POWER 3 – Maintenance-free, Extra High Power

Special polyester tension cords combined with layers of transversely aligned fibre filled rubber give our **optibelt Red Power 3** belts truly maintenance-free properties. No re-tensioning is required throughout the life of the belt.

- **S=C Plus** precise length tolerance as with **optibelt SK**
- Up to 50% more power than standard **optibelt SK** belts
– higher power or fewer belts.
- Direct, drop-in replacement for standard belts
– no disadvantages or limitations.



optibelt SUPER X-POWER – High performance Cogged Raw Edge belt

Our moulded cogged raw edge belts can transmit extremely high powers and are suitable for use with small pulley diameters on account of their flexible, cogged design making them particularly well suited for applications where space is limited.

- **M=S** process means that every belt is individually ground to precise length tolerance for use in sets without matching and smooth running.
- Extremely low stretch / Low maintenance



optibelt VB – Premium quality, wrapped classical section V-belt

Classical profile V-belts to ISO 4184 / DIN 2215

- **S=C Plus** precise length tolerance exceeds ISO set requirements so belts can be combined in sets without matching.

	Temperature Range °C	Static Conductive to ISO 1813	Oil Resistance	Max. Belt Speed m/s	Profiles
optibelt SK	-40 / +70	Yes	Good	≥ 42	SPZ, SPA, SPB, SPC
optibelt RED POWER 3	-30 / +100	Yes	Good	≥ 55	SPZ, SPA, SPB, SPC
optibelt SUPER X-POWER	-30 / +90	Yes	Good	≥ 55	XPZ, XPA, XPB, XPC
optibelt VB	-40 / +70	Yes	Limited	≥ 30	5, 6, 8, Z, A, B, 20, C, 25, D, E

Our standard range of V-belts listed above are generally available from UK stock.

Optibelt also manufacture a wide range of belts with special and high performance constructions for applications which require properties beyond those offered by standard belts.

Sprockets

Sprockets are manufactured to the same exacting standards as Challenge chain. The range includes both taper bore and pilot bore sprockets in simplex, duplex and triplex. Double simplex sprockets are also available.

Challenge offers all standard sprockets ex-stock including BS and ANSI sprockets, plate wheels and idler sprockets.

Special sprockets are manufactured to order according to customer requirements.



Belts

All belts feature international labeling and fully comply with ISO, BS, DIN and other international standards. The extensive Challenge range of quality belts include our:

- Classical V-Belts (Z, A, B, C, D)
- Classical CRE V-Belts (AX, BX)
- Wedge Belts (SPZ, SPA, SPB, SPC, SPP)
- CRE Wedge Belts (SPAX, SPBX, SPCX)
- Narrow V belts (3V, 5V, 8V)
- Classical Timing Belts including sleeves (XL, L, H, XH)
- Curved Tooth Timing Belts including sleeves (HTD in 3M, 5M, 8M and 14M)
- Other belts to suit agricultural and automotive applications are available to special order



Pulleys

The Challenge range of 'V' pulleys are produced with taper bore configuration and conform to ISO 4183. Pulleys are produced from phosphated GG25 grade cast iron and are balanced to Q6.3 or better.

Challenge also manufacture taper bore and pilot bore classical pulleys, HTD and metric timing pulleys, plus special timing pulleys to the same demanding specifications.



Taper Bushes & Hubs

For torque transmission you need the maximum contact area. Challenge's high machining tolerances deliver just that, with over 500 metric and imperial bore sizes of taper bush available and manufactured from close grain cast iron.

To complement our range of shaft fixings, Challenge also manufacture precision machined low carbon steel Weld-on-Hubs, as well as phosphated Bolt-on-Hubs in GG22 cast iron, plus a broad range of keyed and keyless adaptors; ideal for our pilot bored components.



Cone Clamping Elements

Challenge Shaftlock keyless shaft fixings come in a wide range of size and configurations and are simple to install and uninstall.

Challenge Shaftlock is a premium grade locking assembly with high machining tolerances and surface finishes resulting in high torque ratings.



Shaft Mounted Speed Reducers (SMSR)

The workhorse on many conveyors, Challenge's range of metric SMSRs and imperial TXT units are fully interchangeable with other manufacturers and are supplied complete with a torque arm. The Metric SMSR is available with the Grip-Loc hub system or standard output hubs with reducing bushes. The TXT unit is available with a full range of imperial output hub bushings. Backstops for both units are available and sold separately.

Consistent quality and close tolerances are guaranteed by Challenge's production line manufacturing and all units are fully traceable via a unique serial number. Challenge gearboxes are test run for 30 minutes before final quality control and drained of oil before shipment.



Torque Limiters

The torque limiter range from Challenge will save money in damage and downtime, with its zero manual re-setting and simple installation, this unit works with our plate wheels, sprockets, gears, pulleys, couplings etc.



Shaft Couplings

Challenge shaft couplings are suitable for use in a wide range of applications.

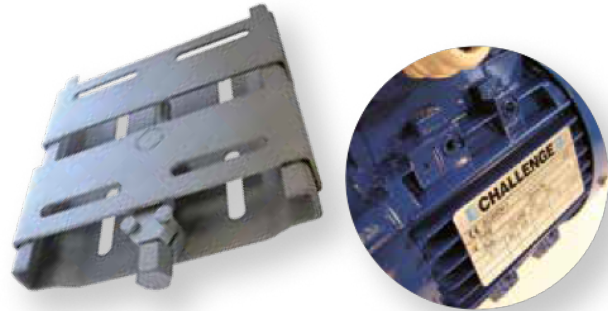
The range encompasses FFX tyre coupling, HRC, Jaw and Chain shaft couplings as well as our NPX, RPX and CNM couplings which match industry standards.

Whether you need to absorb shock from a crusher or drive a smooth running generator, Challenge has a suitable coupling for your application.



Motor Mounts

Manufactured from galvanized steel, Challenge motor mounts maintain your motor's alignment and drive tension, whilst reducing vibration and noise. They are easily adjustable and available in five motor frame sizes covering 63 to 180.



POWER
TRANSMISSION

Electric Motors

The Challenge range of three phase electric motors comply with IEC 60034 standards and are available in IE1, IE2 and IE3 efficiencies. The motors are CE approved having fan cooled, high grade cast aluminium alloy squirrel caged construction, incorporating engineering grade plastic terminal boxes. All motors have multi-mount feet and thus can achieve numerous mounting positions.



Worm Gear Units

Challenge offer a range of worm gear units with aluminium alloy cases. This extremely versatile unit can be offered with output shafts, electric motors, input flanges, torque arms with many different configurations to fulfil most application criteria. The sizes match industry standards.



Bearings

Our range of bearings includes metric 1600, 6000, 6200, 6300 and 6800/6900 series, and R series imperial bearings. All our roller bearings are shielded for longer life and ease of maintenance. We also stock a popular range of metric and imperial taper roller bearings and spherical roller bearings. Special + non standard bearings are available upon request.



CHALLENGE

Bearing Units

Challenge Triple Seal Pillow blocks, 2 and 4 hole flange units and take-up units all have triple lipped seals fitted as standard. These triple seals ensure the longevity of these bearing units and make them ideal for high dust environments such as in agriculture, mining and quarrying applications. Additional options include: pressed steel housings, plastic housings + stainless steel housings + inserts.



Agri Range



Challenge AGRI Chain – These chains for agricultural machinery are fully interchangeable with major machinery manufacturers and are aimed at the replacement market. Incorporating the most advanced heat treatment processes and a special lubricant, these chains are engineered specifically to cope with the conditions persistent in agricultural applications.

Challenge AGRI Bearings – This expanding range consists mainly of industry standard bearing units with double lipped seals and wheel bearing kits for specific machines. These industry standard bearings are manufactured using chromium bearing steels and filled with proprietary lithium based grease.



Challenge AGRI Belts – This range of high quality fan and drive belts for agricultural machinery are produced to the same exacting specification as our standard range of V and Wedge belts. Top quality together with excellent stock availability and reasonable pricing mean that these popular belts are quickly becoming the standard for agricultural users around the world.

The new generation Challenge hub for tillage, seeding and marking discs with a special sealing arrangement and brand new range of PTO units are also available within our agricultural range.



Challenge Technical Catalogue

The Challenge Power Transmission Technical Catalogue covers our entire range of products in our 430 page publication. Contact your local Challenge Sales office for your copy now.



Never a problem always a ...

CHALLENGE[®]
www.challengept.com



**Shaft
Fixings**

CHALLENGE[®]
www.challengept.com



**THE WIDEST RANGE OF
POWER TRANSMISSION
PRODUCTS UNDER
ONE BRAND**

**REPLACEMENT
QUALITY
guarantee**

Flange Units

Plummer Blocks

Bolt on Hubs

Pillow blocks

Electric Motors

FFX Couplings

Taper Bore Pulleys

Pop Metric Bearings

Taper Roller Bearings

Conveyor Sprockets

Taper bushes

Torque Limiters

Timing Pulleys

Synchronous Belts

Vee Belts

Weld on Hubs

Clamping Elements

Transmission Sprockets

Motor Slide Bases

Geared Drives

Shaft Mounted Speed Reducers

All types of Chain

Leaf Chain

CRE Belts

RPX Couplings

HRC Couplings

CNM Couplings

Jaw Couplings

Chain Couplings

NPX Couplings



JAPANESE PRECISION



Located in Kansai Science City, the Kyotanabe plant embodies our wide spectrum of cutting-edge technological solutions. Our aim is to develop this environmentally friendly facility into the world's number one chain plant. Furthermore, Kyotanabe's Technical Centre plays a vital role within the Tsubaki Group through its R&D activities and distribution of knowledge. The Kyotanabe plant is an excellent example of a facility built on the foundation of Tsubaki's technical expertise.



Consideration for the Global Environment

The Tsubaki Group is working to conserve the environment and reduce the environmental impact of its operations by improving the efficiency of its manufacturing activities.



In addition, the Tsubaki Group will continually take on the challenge of sustainable value creation by advancing the development of environmentally friendly products.

These eco-products help customers reduce energy consumption and improve the economic aspects of their operations.

About TSUBAKI

Established in 1917, Tsubakimoto Chain Company is the world's premier manufacturer of power transmission products with strong market positions in premium quality ANSI & BS roller conveyor & engineering chains and associated power transmission components such as Cam Clutches, reducers & linear actuators.

At TSUBAKI we know that customers want the best. Indeed, we take pride in our ability to deliver an extensive product lineup that satisfies these high expectations. We are also aware that each and every one of our customers has unique requirements. Our focus is on providing our customers around the world with concrete solutions by developing products to suit different countries, regions and business environments. Tsubakimoto UK in Nottingham, serves the markets of the UK, Ireland and Iceland.

Stockholding UK/Europe

TSUBAKI stocks a wide range of standard power transmission products; many of which provide innovative solutions. We pride ourselves on customer service excellence and understand the importance of having stock available to fulfil our customer's requirements. The UK and European warehouse hold stock in excess of £1.8m and offer a wide product range of drive, conveyor, attachment chains & sprockets. We also supply power transmission component products such as Cam Clutches, torque limiters and couplings.

tsubaki.eu

TSUBAKI SOLUTIONS LINE-UP



POWER
TRANSMISSION



GT4 Winner: General Purpose

- Seamless bushing and lubrication grooves to improve wear resistance
- Centre sink pin rivet for easy disassembly
- Ring coined connecting link for maximum transmission capacity



Lambda: Lube Free

- Provides low maintenance and clean operation, no external lubrication required
- Bushing impregnated with lubrication for improved wear resistance
- Centre sink pin rivet for easy disassembly
- Ring coined connecting link for maximum transmission capacity



Titan: Anti Dust and Abrasives

- Special coated pin for wear resistance in harsh/dusty applications
- Seamless bushing and lubrication grooves to improve wear resistance
- Centre sink pin rivet for easy disassembly
- Ring coined connecting link for maximum transmission capacity



HEAVY DUTY

Heavy Series: Increased Strength

- Extra transmission capacity
- Highly resistant to shock loads
- Superior tensile strength and fatigue resistance
- Extended life due to perfectly cylindrical solid bush



NEPTUNE™

Neptune: Anti Corrosion

- Special coating provides excellent corrosion protection
- Resists common food industry wash down chemicals and salt water
- Seamless bushing and lubrication grooves to improve wear resistance
- Centre sink pin rivet for easy disassembly
- Ring coined connecting link for maximum transmission capacity



PC CHAIN

PC Chain: Anti Corrosion

- Stainless Steel links to resist corrosion
- Engineering plastic provides self lubrication
- Light weight and low noise



STAINLESS STEEL

Stainless Steel: Anti Corrosion

- Highly resistant in corrosive environments
- Wide temperature range (-20 degC to 400 degC)
- All components made of 304SS austenite stainless steel (SUS304)

ROLLER CHAIN GT4 WINNER

TSUBAKI GT4 Winner is the most advanced BS/DIN standard roller chain in the European market. Since 1917 Tsubakimoto Chain Company has maintained a line-up of cutting-edge chain products with exceptional quality and performance. TSUBAKI is proud of the 4th generation, enhanced European premium BS/DIN chain.

Advantages

TSUBAKI RS roller chain GT4 Winner is enhanced with the following advantages:

Wear resistance

TSUBAKI's patented LG (Lube Groove) seamless bushes are precision components and perfectly cylindrical. Our special lube grooves hold oil at the point of contact, where the chain needs it most. The result is a chain that lasts longer with lower maintenance costs over the lifetime of the chain. The Lube Groove is applied to RS16B, RS20B and RS24B.

Easy disassembling with centre sink pin design

The chains can be easily and safely disassembled with a standard screw type cutter without damaging bushes. Center sink riveting is applied to RS08B up to RS16B single strand chain.

Increased kW Rating

The TSUBAKI Ring Coining process on the connecting link plate allows the chain to be specified up to its full kW rating.



Ring Coined Connecting Link Plate

In general, connecting links have a 20% lower fatigue strength than the chain itself. However, TSUBAKI developed a special process to eliminate that loss of fatigue strength and still satisfy the customers demand for easy assembly: the Ring Coining process. Generating a cold deformation around the pin hole of the connecting link plate results in residual stress around this region, thereby adding strength. By using this process we can achieve 100% transmission capacity of the base chain.

Constant Quality Level

In pursuit of outstanding quality, every TSUBAKI chain is made of a special steel alloy, the specification of which has been developed by the TSUBAKI engineering department for selected steel mills to work with. TSUBAKI produces the GT4 Winner under highly controlled conditions in its advanced heat treatment facilities. This, in combination with TSUBAKI fatigue strength tests, ensures that our customers can always rely on a constant level of quality whenever using TSUBAKI products.

Customized Pre-Lubrication Service

Proper lubrication is the key to extending the life and improving the performance of a chain. In order to get the best performance in general applications (-10°C to +60°C), all GT4 Winner drive chains are pre-lubricated.

For special applications, TSUBAKI can provide chains which are pre-lubricated with a special lubricant on customer demand:

- High temperature
- Low temperature
- Food safe
- Outdoor exposure
- Dusty environment

Please consult TSUBAKI for more detailed information.



LAMBDA LUBE FREE ROLLER CHAIN

TSUBAKI's LAMBDA Chains were the first in the industry to use a special oil impregnated bush. Since their launch in 1988, they have been adopted for diverse industries and applications, and their performance has been highly rated. TSUBAKI has a wide line-up of lube-free, long life products that help customers reduce costs.

Technical Evolution

As a pioneer in the lube-free chain market, TSUBAKI will reveal some of the key elements behind LAMBDA's outstanding performance:

Sintered Oil Impregnated Bush

The microscopic pores in the seamless sintered bush are vacuum filled with high performance NSF-H1 lubricant. This innovation provides a 30%* longer wear life.

* Average increase compared to the previous generation of lambda chain.

Special Coated Pin

The special coating on the pin surface enhances the long term internal lubrication.

Centre Sink Rivet

The unique centre sink pin design offers easy chain disassembly and the markings on the rivet head will identify pin rotation.

Ring Coin

The Ring Coin connecting link ensures that the chain can be specified up to its full chain capacity.

Special Environments

TSUBAKI LAMBDA has outstanding performance in temperatures up to +150°C.

For temperatures above +150°C: Due to special NSF-H1 certified lubrication impregnated bushes, TSUBAKI LAMBDA KF Series is usable in a wide temperature range (from -10°C to +230°C) while at the same time being kind to the environment. Please consult TSUBAKI for more detailed information.

Advantages

TSUBAKI has enhanced the LAMBDA with the following advantages:

Save Maintenance Costs

No expensive labour costs as it is not required to manually lubricate this chain.

Save Purchasing Costs

Lower frequency of purchasing due to the high quality of the chain and its long economic life. No purchasing of lubricants or lubrication systems necessary.

Higher Productivity

No unforeseen downtime due to chain breakdown.
Less time required for maintenance and therefore more time for production.

Environmental Friendly

Applications run clean thus reducing the risk of contaminating products, machines, floor etc. In addition, the LAMBDA chain is ideally suited for food industry applications due to the use of a NSF-H1 lubricant.

Interchangeability

Chains:

BS LAMBDA Chains are fully interchangeable with standard BS roller chains.

Sprockets:

Standard BS roller chain sprockets can be used. However, due to the extended lifetime of BS LAMBDA chain, TSUBAKI recommends to install sprockets with hardened teeth in every LAMBDA application.



Basic Construction

CHAIN WITH ATTACHMENTS

In the world of attachment chain TSUBAKI is the manufacturer you require to assure smooth operation. Whether your application requires attachments or extended pins in Carbon Steel, Neptune™, Nickel Plating or Stainless Steel, TSUBAKI is your partner. TSUBAKI's maintenance free solution, LAMBDA, is also available with a wide range of attachments. When starting with a completely new design, TSUBAKI can tailor make an attachment chain for you in any specification.



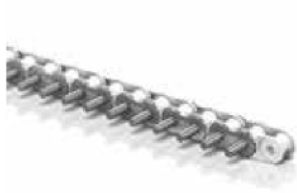
GT4 WINNER WITH
BENT ATTACHMENTS



LAMBDA WITH
BENT ATTACHMENTS



NEPTUNE WITH
STRAIGHT ATTACHMENTS



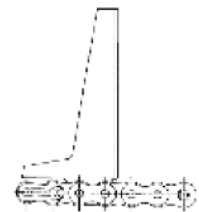
PC WITH
EXTENDED PINS



LAMBDA FOR
CHOCOLATE MOULDING



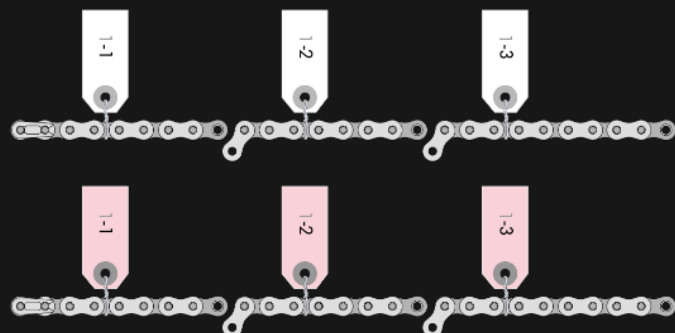
NP/SS FOR
FILM GRIPPING



LAMBDA FOR
CARTONING

MATCH & TAG

When even more accurate tolerances are required, TSUBAKI can offer an effective solution with the Match & Tag Service. This can be useful for attachment chains which have to run parallel in pairs and where a minimum of chain length tolerance is required.



MADE TO ORDER SPROCKETS



TSUBAKI has designed and manufactured made-to-order (MTO) sprockets since more than 60 years.



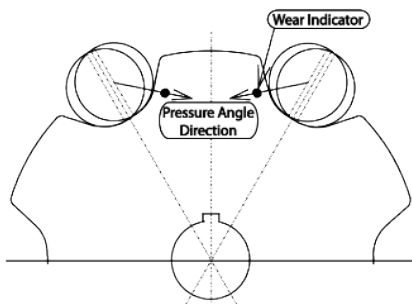
POWER
TRANSMISSION

Extensive design, engineering and manufacturing capabilities allow TSUBAKI to produce a wide variety of MTO sprocket products for a multitude of applications. Our capabilities include CNC machining for special tooth profiles, in-house heat

treatment and a variety of product finishes. Our CAD design capabilities allow us to provide highly customized solutions for almost every application.

Wear Indicator

TSUBAKI Sprocket Wear Indicator Technology assures maximum uptime and drive system efficiency by providing visual confirmation of excessive sprocket wear. Incorporating this patented technology into MTO, ANSI, or Engineering Class sprockets reduces overall system cost by offering predictable maintenance intervals to avoid catastrophic failure.



Segmental rim and hubs

Segmental rims are designed to save time and money by reducing costly downtime. The rims can be replaced without having to remove shaft and bearings.

CAM CLUTCH - FREEWHEEL

TSUBAKI offers the most complete and versatile selection of one-way clutches in the global industry. Cam Clutches are precision devices which lock the inner- and outer races, through a wedging action of cams, to transmit torque in one direction of rotation and overrun in the opposite direction. These units are often referred to as freewheels, sprag clutches, overrunning clutches, backstops or one-way clutches, depending upon on the application for which they are used.

Design Features

Full Cam Complement

The full complement of cams provides the maximum number of load transmitting members per given diameter. The result is a higher torque capacity than other clutches.

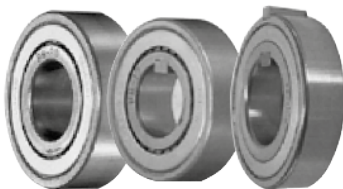
Cam Design

Precision formed cams, made of special alloy steel assure extra long wear- and fatigue life.

High Quality Components

Outer- and inner races are made of high-quality alloy steel with high surface hardness and core toughness. The races are precision ground, providing excellent concentricity and surface finish to obtain accurate cam rotation.

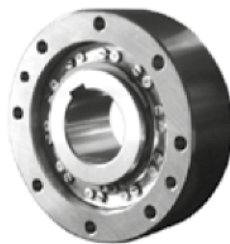
BB, BB1K, BB2K SERIES



BB Series Cam Clutch Freewheels with shields have bearing characteristics and dimensions of type 62 ball bearings. Press fit, single inner race keywayed (1K) and inner and outer race keywayed (2K) versions available. Keys for inner and outer race also available.

Bore sizes - 15, 17, 20, 25, 30, 35, 40mm
Maximum torque - 260Nm

BR-HT SERIES



BR-HT centrifugal lift off Cam Clutch series Backstops are designed for high speed backstopping operations with higher torque requirements. The BR-HT Series is an open type design for directly into machinery such as gear reducers, pumps and winches.

41 Clutch sizes
Bore range - 20-320mm
Maximum torque - 366000Nm

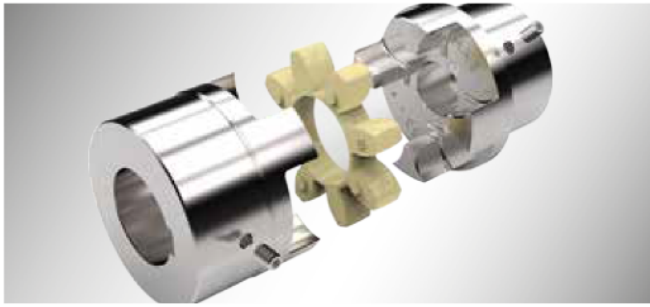
BSEU / BSEU 2GD SERIES



BSEU Series are pre-lubricated European style Cam Clutches designed primarily for backstopping operations. The BSEU has an integral torque arm on the outer race and is fitted with high performance V-ring seals. The BSEU Series is fitted TSUBAKI's unique self-lubricating cam/roller mechanism for longer life. The BSEU 2GD Series is fitted with a lip seal and outer cover for enhanced dust and spray protection.

4 Clutch sizes
Bore sizes - 20, 25, 30, 35, 40, 45, 50, 55, 60, 65, 70, 75, 80, 90mm
Maximum torque - 4700Nm

HABIX



POWER
TRANSMISSION

	Part 1		Part 2		Part 3		Part 4		All Parts	
Size	PB (mm)	Max. (mm)	PB (mm)	Max. (mm)	TL Bush	l_3 (mm)	TL Bush	l_4 (mm)	d_a (mm)	S (mm)
19	0	19	17	24	-	-	-	-	40	16
24	0	24	22	28	1008	22	1008	22	55	18
28	0	28	26	38	1108	22	1108	22	65	20
38	10	38	36	45	1108	22	1108	22	80	24
42	12	42	40	55	1610	25	1610	25	95	26
48	13	48	46	60	1615	38	1615	38	105	28
55	18	55	53	70	2012	32	2012	32	120	30
65	20	65	63	75	2012	32	2517	45	135	35
75	28	75	73	90	2517	45	3020	51	160	40
90	38	90	88	100	3020	51	3535	89	200	45

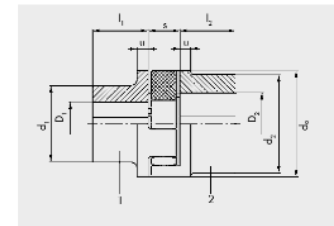
Size	Max. Speed RPM	Torque (Nm)				Max. Shaft Misalignment		
		White 92A Shore		Red 98A Shore		Radial (mm)	Axial (mm)	Angular (deg)
		Nominal	Changing	Nominal	Changing			
19	19000	10	2.6	17	4.4	0.2	1.2	1.2
24	14000	35	9	60	16	0.22	1.4	0.9
28	11800	95	25	160	42	0.25	1.5	0.9
38	9500	190	49	325	85	0.28	1.8	1.0
42	8000	265	69	450	117	0.32	2.0	1.0
48	7100	310	81	525	137	0.36	2.1	1.1
55	6300	410	105	685	178	0.38	2.2	1.1
65	5600	625	163	940	245	0.42	2.6	1.2
75	4750	1280	333	1920	499	0.48	3.0	1.2
90	3750	2400	624	3600	936	0.5	3.4	1.2

Habix premium quality flexible jaw couplings are machined on all surfaces for precise running characteristics and increased durability.

- Failsafe
- Wear resistant PU Inserts resistant to Oil, Ozone & ageing.
- Temperature Range : -20°C to +80°C
- Balanced to DIN ISO 1940 Q16
- Jaw material Cast Iron EN-GJL-250 (GG-25)

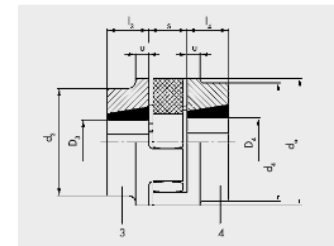
Type HWN

Pilot Bore



Type HWT

Taper Bore



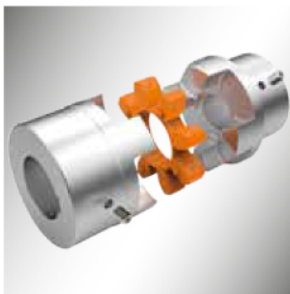
Parts 1, 2, 3 & 4 can be combined

Spider elements available in:

- 92A Shore White
- 98A Shore Red

Performance values are based on an ambient temperature of 30°C, 1500rpm and single plane misalignments. For higher speed, temperature and combined misalignments values should be reduced.

HABIX Plus – Backlash-free/Low inertia



Type HPN

Finished Bore



Type HPK

Clamping Type

- Precision press-fit of element ensures backlash-free operation.
- Aluminium construction (sizes 19-48) results in very low weight / inertia. (>48 = steel)
- Elements available in Green 65A & Orange 98A Shore
- Temperature Range -30°C to +100°C / 120°C

PRODUCTS OVERVIEW



O-RINGS



M Seals' products are quality assured and we keep over £1.5m of stock ready for next-day delivery. We respond to customers quickly and provide reliable delivery of quality o-rings and sealing products. We stock o-rings in a wide range of materials, including Nitrile, Viton®, EPDM, Neoprene®, Kalrez®, Silicone & PTFE.

Ranges of o-rings include British Imperial (BS1806), British Metric (BS4518), European Metric (ISO/DIN 3601), including German (DIN 3771), Swedish (SMS 1586/1588) and French (NFT 47 501). American (SAE AS568A, MS 29 513) and Japanese Metric (JISB 2401).

Many of our o-rings are available with various approvals including Norsok M710, FDA, WRC, WRAS, UL, DVGW, KTW, BGVV, KIWA, USP, NSF/ANSI, EN549, EN681-1 and EN682. All approvals can be provided with full certification at request.

SEALS

OIL SEALS & V-RINGS



Oil seals or rotary shaft seals are made from synthetic elastomers bonded to case, which is usually metal. They are used in a wide range of applications under very varied conditions.

Oil seals provide an economical means of sealing against rotating shafts. They prevent system lubricants from leaking and also external contamination from entering.

V-rings are unique all-rubber seals for rotary shafts. They are made entirely of rubber material and comprise a body and a conical shaped sealing lip, which is joined to the body by means of a resilient hinge.

V-ring seals are available in a large variety of designs and sizes to fit the requirements of most applications. V-rings are normally made of nitrile rubber. For applications where higher temperatures occur or where aggressive media are present, V-rings made of fluorocarbon rubber should be used.

CIRCLIPS | FASTENERS



Circlips are a cost saving alternative to fastening. Used in such applications as machined collars on shafts, or washer and pin assemblies, circlips still offer the same benefits of a single fastening mechanism by reducing material waste and the number of components.

M Seals UK can supply the full range of circlips in imperial and metric sizes, please refer to our website www.m-seals.co.uk for ranges and size charts.

DIPLOMA PLC

Performance you can trust

BEARING GREASES

Choosing the right product

Selecting the most suitable ROCOL® bearing grease for the job starts here.



LUB & MAIN

What condition is your bearing operating in?

- ▶ Food/clean environment
- ▶ Normal i.e. no extremes of temperature or condition
- ▶ Fast speeds i.e. greater than 3,000rpm
- ▶ Wet or humid conditions
- ▶ High load or vibration
- ▶ High or low temperature

What type of bearing requires lubricating?

- ▶ Plain e.g. phosphor bronze bushes
- ▶ Ball, roller, or needle

* Select whichever temperature range maximum temperature of operation falls within. Except in low temperature applications where the minimum temperature of operation is the main criteria.

What temperature range is your bearing operating in?*

	Low	Medium	High
Food	Down to -50°C	-30°C to +160°C	Up to +280°C
Industrial	Down to -73°C	-30°C to +160°C	Up to +280°C

Operating condition	Bearing type	Temperature range	ROCOL product
Normal conditions	All	Low: -50°C to +200°C	SAPPHIRE® Premier
		Medium: -30°C to +160°C	SAPPHIRE® 2, 1 or 000
		High: -50°C to +200°C	SAPPHIRE® Premier
		High: -50°C to +280°C	SAPPHIRE® Endure
High speed	Electric motor / fan bearings	Medium: -30°C to +160°C	SAPPHIRE® Advance 2
	Low or high temperature	Medium: -50°C to +200°C	SAPPHIRE® Premier
Wet conditions	All	Medium: -20°C to +150°C	SAPPHIRE® Aqua 2
High loads	Vibration load: Plain, ball, roller, needle, etc.	Medium/High: -10°C to +235°C	SAPPHIRE® Extreme
	Shock load: Plain, ball, roller, needle, etc.	Medium: -30°C to +150°C	SAPPHIRE® Hi-Load 2

Performance you can trust

SAPPHIRE® AQUA 2

Multi-purpose water-resistant EP bearing grease ideal for applications operating in damp, humid, wet or water-submerged conditions.

- ▶ Adheres strongly to components to resist water wash-off and even tidal flow in salt water environments.
- ▶ Excellent corrosion resistance to protect in humid, damp and even wet conditions.
- ▶ Aluminium complex soap technology with EP additives for outstanding high load performance superior to standard soap-thickened lubricants.

Part Code	Size	TEMP RANGE
12751	380g	-20°C to +150°C
12754	18kg	
12755	4kg	
12758	50kg	



KEEP IT RUNNING SMOOTHLY WITH SAPPHIRE® FROM ROCOL

Premature failure of even the smallest bearing can result in significant downtime and loss of production. For efficient plant performance and machinery that runs smoothly, always choose a lubricant that's reliable and lasts the distance.



Use your phone camera to scan the QR code to find out more



SAPPHIRE® HI-LOAD 2

Long life, multi-purpose bearing grease fortified with MoS₂.

Combines the triple life performance of SAPPHIRE 2 with molybdenum disulphide providing an effective lubricating film under the most extreme loadings where grease film is squeezed out.

- ▶ High tenacity film with extreme durability that reduces frictional heat, wear and extends component life and lubrication intervals.
- ▶ Ideal for highly loaded applications where shock and vibration occur.
- ▶ Maintains integrity in extreme conditions and protects over extended intervals to reduce lubricant usage and equipment failure.

Part Code	Size	TEMP RANGE
12761	400g	-30°C to +150°C
12764	18kg	
12765	5kg	



SAPPHIRE® Spray Grease

Multi-purpose EP grease fortified with PTFE in an easy-to-apply aerosol.

- ▶ Provides excellent protection for components at low temperatures and in extreme sub-zero conditions.
- ▶ Lithium complex soap technology with EP additives for outstanding high load performance.
- ▶ Fully synthetic base oil leaves minimal residues even at elevated temperatures.
- ▶ Highly resistant to oxidation and protects over extended intervals to reducing lubricant usage, equipment failure and downtime.
- ▶ Excellent corrosion resistance to protect in humid, damp or wet conditions.
- ▶ PTFE reduces friction and stick-slip on start-up through more controlled movement.

Part Code	Size	TEMP RANGE
34305	400ml	-50°C to +200°C



To order contact your local IADA member today or visit:
WWW...

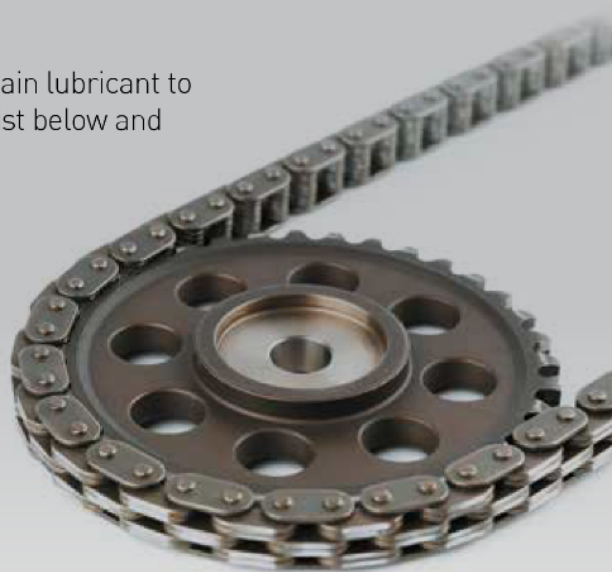
CHAIN LUBRICATION

Choosing the right product

For the greatest results, choose the ROCOL® chain lubricant to suit the operating conditions. Choose from the list below and consult the chart to find your optimum product.

- ▶ Normal i.e. no extremes of temperature or condition
- ▶ High temperature of up to +280°
- ▶ Extra high temperature of up to +550°
- ▶ Dusty conditions

This chart is intended to assist product selection for most common types of applications. If in doubt phone ROCOL Technical Helpline or your ROCOL Sales Engineer.



LUB &
MAIN

Primary operating condition	Aerosol or fluid	Temperature range	ROCOL product
Normal conditions	Aerosol	Medium: -30°C to +150°C	CHAIN & DRIVE Spray
		Medium: -30°C to +180°C	CHAINGUARD Hi-Load Spray
	Fluid	Medium: -15°C to +120°C	CHAIN & DRIVE Fluid
	Aerosol / Spray	Low: -55°C to +250°C	SAPPHIRE® Precision Lube Spray
Medium-High temperature	Fluid	Medium: +10°C to +230°C	CHAINGUARD 230
	Fluid	High: 0°C to +280°C	CHAINGUARD 280
Extra high temperature	Fluid	Extra high: -10°C to +550°C	CHAINGUARD 550
Dusty conditions	Fluid/Aerosol	Medium: -50°C to +450°C	DRY MOLY Fluid / Spray

Turn the page for a full selection of Chain Lubrication products from ROCOL®

Performance you can trust

LUB & MAIN

FOOD GRADE LUBRICATION

FOODLUBE® SPRAY GREASE

High performance, multi-purpose, food-grade grease. Fortified with PTFE, designed for the enhanced lubrication of all types of slides, bushes, pins and bearings.

- ▶ Superior load and wear properties significantly extend bearing life
- ▶ Highly resistant to water washout offering excellent corrosion protection

Part Code	Size	TEMP RANGE
15030	400ml	-50°C to +160°C
31 H1		



DRY PTFE SPRAY

Food grade, premium performance, invisible dry film lubricant. Low friction, non-stick, PTFE lubricant for the dry lubrication of cams, slides, open bearings, chutes and shears.

- ▶ Non-staining film reducing machine friction
- ▶ High percentage PTFE content actively reducing waste
- ▶ For use where a wet film cannot be tolerated

Part Code	Size	TEMP RANGE
34235	400ml	-200°C to +270°C
4 H1		



FOODLUBE® CHAIN SPRAY

Tenacious, food-grade spray lubricant for extended chain life, ideal for all types of drive and conveyor chains.

- ▶ Outstanding penetration into links and pins for maximum protection
- ▶ Highly resistant to water wash off, protecting through clean downs
- ▶ Effective load-carrying capacity to protect critical parts of the chain
- ▶ Tenacious low drip formulation reduces the risk of contamination
- ▶ Good water displacing properties

TEMP RANGE
-20°C to +150°C

Part Code	Size
15610	400ml
16 H1	



ROCOL® A division of  Ltd



FOODLUBE® WD SPRAY

Food grade water displacing and lubricating spray fortified with PTFE.

- ▶ Silicone-free formulation
- ▶ Excellent anti-wear and lubricating properties extending component life
- ▶ Superior penetrating and cleaning performance to clean and lubricate in one application
- ▶ Outstanding corrosion protection

Part Code	Size	TEMP RANGE
15010	300ml	-20°C to +110°C
32 H1		



FOODLUBE® MULTI-LUBE FLUID

A fully synthetic, multi-purpose lubricant, fortified with PTFE for effective lubrication particularly on chains, bearings and slides.

- ▶ Clean, non-toxic, thin film aids fast penetration
- ▶ Good load-carrying properties, protecting components for longer
- ▶ Excellent corrosion protection
- ▶ Available as bulk or convenient trigger pack

Part Code	Size	TEMP RANGE
15120	500ml	-50°C to +180°C
15126	5L	
20 H1		



FOODLUBE® DISMANTLING SPRAY

A fast-acting, highly penetrating food-grade spray for the effective release of corroded and seized components.

- ▶ Highly efficient penetration
- ▶ Short term corrosion protection for released parts
- ▶ Non-toxic formula

Part Code	Size	TEMP RANGE
15720	300ml	-20°C to +110°C
23 H1		



PRECISION SILICONE SPRAY

Food grade, high performance, silicone aerosol lubricating film with wide temperature stability for use on slides, chutes, bearings and conveyors.

- ▶ Long-lasting formulation with active ingredient significantly reduces waste
- ▶ Resists oxidation and corrosion
- ▶ Non-toxic, clean and colour-free

Part Code	Size	TEMP RANGE
34035	400ml	-50°C to +200°C
1 H1		



LUB & MAIN

Need help keeping your oil stores tidy?

ROCOL® provide a selection of storage cabinets and storage options giving easy access to ROCOL products and maintaining stocks are at the correct levels.





TECDrive Inverter Range

Easy to Use General Purpose Drive

Focused on ease of use, TECDrive provides unrivalled simplicity of installation, connection and commissioning, allowing the user to benefit from precise motor control and energy savings within minutes.

IP20

Up to 37kW

- Easy to use
- Compact & robust

IP66

Up to 22kW

- Outdoor rated
- Dust-tight
- Washdown ready
- Switched option available as seen below.





RAN series bevel gearboxes

Torque range 3 ... 3,000 Nm
Mechanical rating 0.15 ... 91 kW
Gear ratios 1 ... 7,4



F series shaft mounted gearmotors

Torque range 140 ... 14,000 Nm
Mechanical rating 0.17 ... 125 kW
Gear ratios 6,4 ... 2099



HDO series bevel helical gear units (Heavy Duty)

Torque range 25,650 ... 194,050 Nm
Gear ratios 5,6 ... 400



HDP series parallel shaft gear units (Heavy Duty)

Torque range 5,000 ... 194,050 Nm
Gear ratios 7,1 ... 500



BN series AC motors & brake motors

kW rating 0.06 ... 30 kW
Frame sizes 56A ... 200L
Compliance 2006/95/EC (LVD) & 2004/108/EC (EMC)



BX series IE3 premium efficiency AC motors

kW rating 0.75 ... 22 kW
Frame sizes 80B ... 180L
Compliance IEC 60034-30:2008(IE), 640/2009/EC 2006/95/EC (LVD) & 2004/108/EC (EMC)

Centrifugal Pumps

Manufactured as standard with cast iron or stainless steel pump body. Suitable for pumping hot and cold, moderately aggressive liquids.



Single Stage Pumps

Manufactured as standard with cast iron or stainless steel pump body. Suitable for pumping hot and cold, moderately aggressive liquids.

Available: Close-coupled with special motor shaft extension, stub shaft and standard motor or with flexible coupling, adapter, base and standard motor in compliance with EN 733 – DIN 24255.



Multistage Pumps

Using multiple impellers on a common shaft to deliver high pressure, their corrosion resistant liquid-ends and heavy-duty drive-ends are essential features in continuous duty applications.

Available: In vertical and horizontal for boiler feed, carwash, washdown, pressure cleaning, reverse osmosis, chemical and oil processing.



Circulator Pumps

The most common heating pumps are these small (generally under 2kw), single phase, high efficiency circulators.

Available: In single or twin head versions.



Inline Pumps

For larger heating and cooling application as well as process pumps, these inline designs can be single or three phase powered, fixed speed or inverter driven.

Available: In single or twin pump versions.



Self-Priming Pumps

Ideal for transporting liquids containing solids in suspension. Suited for applications where the main feature is the difficulty in priming and are used across industry, construction and emergency.

Available: In cast iron, marine bronze or stainless steel.



Submersible Pumps

For use in markets ranging from water and wastewater treatment, raw water supply, abrasive or contaminated industrial processes, mining and irrigation.

Available: As a stand-alone pump, with or without integral level control, or as an easy install packaged pumping station ensuring minimal on-site work.

Positive Displacement Pumps

Self-priming by design. Suitable for handling viscous products which may also contain solids.



Air Operated Pumps

Air Operated Diaphragm Pumps are easy to use and maintain, have infinitely variable flow control, can suction lift up to 8m, run dry and operate against closed valve without damage.

Available: In a variety of both metal and plastic constructions.



Progressive Cavity

Ideal for handling slurries, viscous and shear sensitive products. Multi-stage pumps are available for high pressure applications or where accurate dosing is required.

Available: In a variety of metals with a huge array of stator materials to suit any application.



Gear Pumps

Used in industrial plants for pumping liquids of any viscosity without solids in suspension: Chemicals and petroleum products, soaps and detergents, adhesives, paint and ink, high temperature liquids and chocolate.

Available: In external and internal gear options.



Screw Pumps

They can handle virtually any non-homogenous fluid, regardless of viscosity, lubricity or abrasiveness e.g. seawater, bitumen, molasses, lime, acid, caustic solution or hydrocarbon.

Available: In high pressure, high capacity, compact and hygienic versions.



Flexible Impeller Pumps

Reversible pump offers smooth, low pulsating, low shear flow. Stainless steel and bronze casings are available for hygienic and marine applications.

Available: Impellers are produced in a variety of materials, (e.g. Natural Rubber, Neoprene, Nitrile and EPDM) making them compatible with a range of fluids.

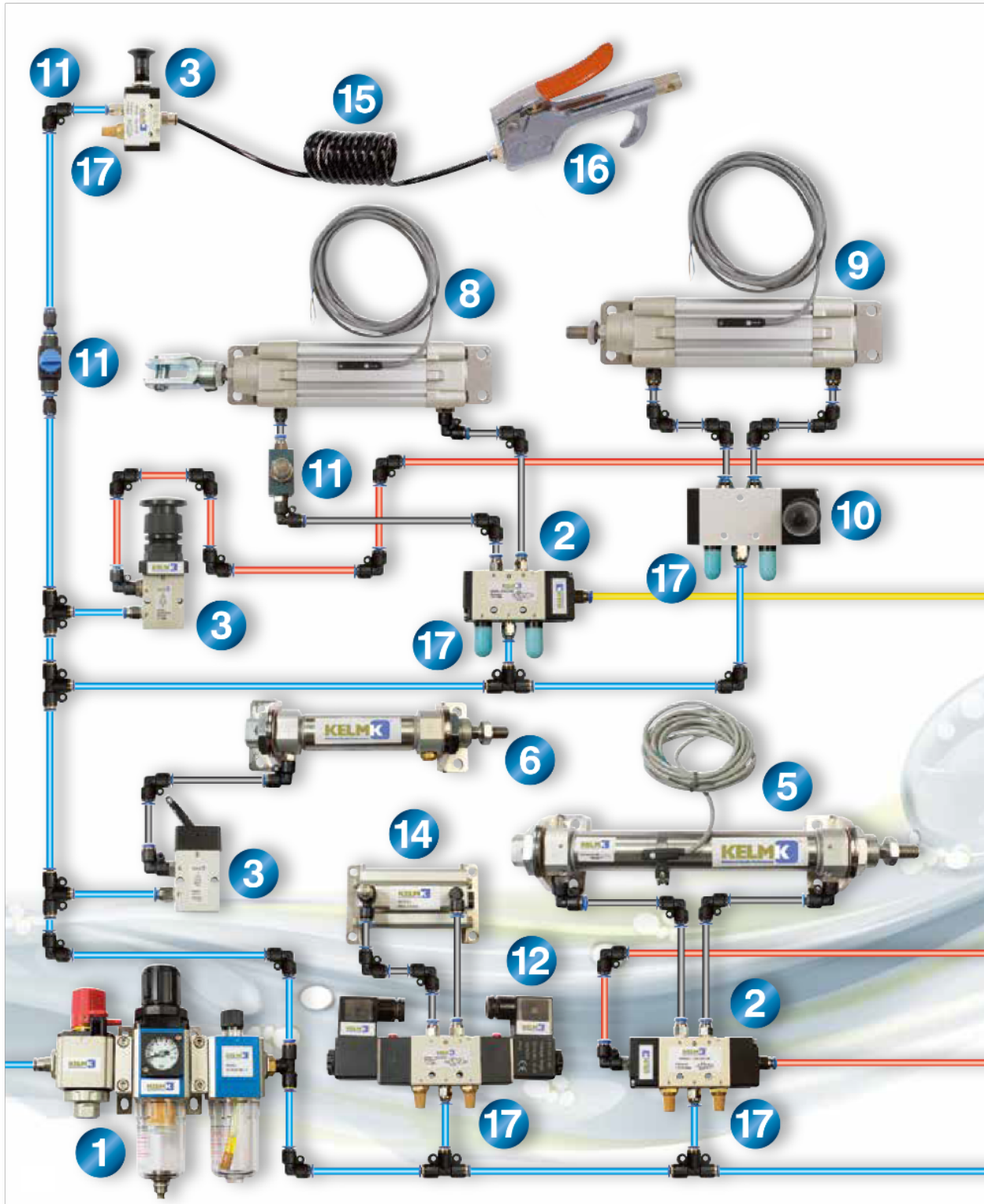


Peristaltic Pumps

Hose pumps are seal-less, can dry run without damage and self-prime up to 9.8m. Used widely for pumping minerals, ceramics, chemicals and inks/ dyes at pressures up to 15 bar.

Available: As a close-coupled unit, constructed in Aluminium or Cast Iron and with a wide variety of hose materials suitable for any application.

Compressed Air System Guide

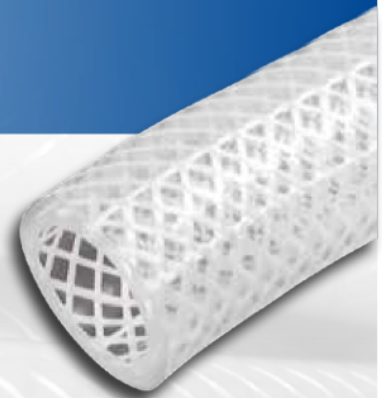


Please refer to our Fluid Power Catalogue for more information



Braided PVC Hose

Reinforced PVC Braided Hose, Type RPVC & HDPVC (to BS6066)



Manufactured from top quality crystal clear 'virgin' PVC compound, and ideal for factory airlines, fluid systems and many industrial applications. Reinforced with a high tensile quality polyester yarn, it offers high working pressures and extreme flexibility.

The hose is resistant to a wide range of chemicals (please consult our Business Development Team for further details).

Applications:

- Water supply and draining
- Transfer of various fluids and powder
- Supplying water, gas, oil, etc. in agriculture and industry
- Compressed air
- Other special purposes

Length*	15m	30m	100m
Size	From 3/16" ID to 2" ID		
Temperature	Min -20°C	Max +65°C	

*Other lengths available on request.

Characteristics:

- Excellent abrasion resistance
- High resistance to alkalis and acids
- Silicone free
- Cadmium free
- Low toxicity
- Excellent transparency
- Manufactured to comply with BS6066 and ISO5774
- Produced from FDA approved materials
- Durable, anti-cold proof, non-inflated
- Highly flexible, lightweight and easy to handle
- No fissure phenomenon by ultraviolet rays and direct rays of the sun
- Little expansion or contraction

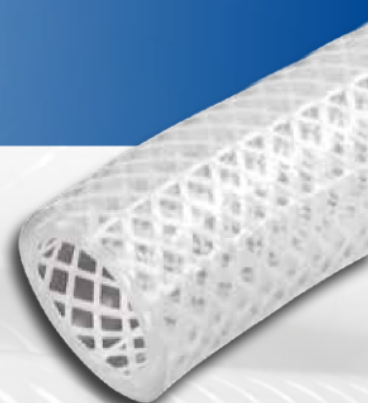


Please refer to our Fluid Power Catalogue for more information



Braided PVC Hose

Reinforced PVC Braided Hose,
Type RPVC & HDPVC (to BS6066)



Part Number	Nominal Dimension	ID x OD mm	Max. Working Pressure bar	Burst Pressure bar	Bend Radius mm	Weight kg/roll
RPVC18	1/8"	3 x 8	13	50	15	1.10
RPVC532	5/32"	4 x 9	13	50	17	1.80
RPVC316	3/16"	5 x 10	13	50	20	2.10
RPVC14	1/4"	6 x 11	15	65	25	2.30
RPVC516	5/16"	8 x 13	15	58	33	2.70
RPVC38	3/8"	10 x 15	12	45	40	3.20
RPVC12	1/2"	13 x 18	12	40	52	4.00
RPVC58	5/8"	16 x 21	10	35	64	5.00
RPVC34	3/4"	19 x 25	10	32	76	7.10
RPVC1	1"	25 x 31	9	28	100	8.90
RPVC114	1.1/4"	32 x 40	6	26	125	16.00
RPVC112	1.1/2"	38 x 46	5	20	152	19.00
RPVC2	2"	50 x 60	3	17	200	31.00
HDPVC14	1/4"	6.5 x 11.5	16	65	30	2.50
HDPVC516	5/16"	8 x 13.5	16	58	35	3.30
HDPVC38	3/8"	10 x 16	15	45	45	3.50
HDPVC12	1/2"	12.5 x 18.5	12	40	52	5.00
HDPVC58	5/8"	16 x 23	10	35	74	7.80
HDPVC34	3/4"	20 x 26	10	32	80	7.30
HDPVC1	1"	25 x 33	10	28	110	12.80
HDPVC114	1.1/4"	32 x 41	6	26	130	18.90
HDPVC112	1.1/2"	40 x 49	6	20	165	23.00
HDPVC2	2"	50 x 62	3	17	220	38.00

Given working pressures are based on an ambient temperature of 20°C. Due to the natural properties of PVC, as the ambient temperature increases the pressures the hose will withstand decrease at an average rate of 15% per increase of 10°C and in similar increments thereafter.



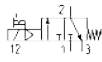
Please refer to our Fluid Power Catalogue for more information

FLUID
POWER

Series 4 Valves and Solenoid Valves

3/2, 5/2 and 5/3 way CC CO CP

Connections: 1/8, 1/4 and 1/2. Full range available.



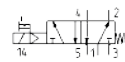
438-015-22^a

^aCoil sold separately



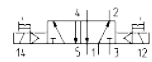
438-011-22^a

^aCoil sold separately



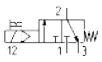
458-015-22^a

^aCoil sold separately



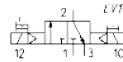
458-011-22^a

^aCoil sold separately



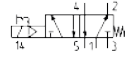
434-015-22^a

^aCoil sold separately



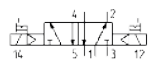
434-011-22^a

^aCoil sold separately



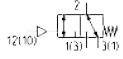
454-015-22^a

^aCoil sold separately

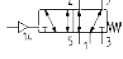


454-011-22^a

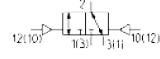
^aCoil sold separately



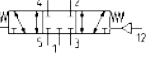
438-35



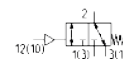
458-35



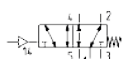
438-33



458-33



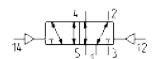
434-35



454-35



434-33



454-33

Full Range Available:

Valve Islands
- UK Assembly



Mechanical and
Manual Valves



Flow Control Valves



Automatic Valves





DeWalt Industrial Tool Company is an American worldwide manufacturer of professional quality and high-end power tools, hand tools and accessories for the construction, manufacturing and woodworking industries.



TOOLBANK



BAHCO

Bahco is a pan-European market leading brand of a wide range of professional hand-held tools such as: handsaws, combination spanners, socket spanners, screwdrivers, adjustable wrenches, cutters, files, bandsaws, pruning tools, holesaws, hacksaw frames and blades.

Professional craftsmen around the globe use their tools and have done so since 1886 when they first began manufacturing saws and then in 1892 the adjustable wrench. That spirit of innovation continues to flourish within their company.



TOOLBANK

STANLEY

BUILT-IN PERFORMANCE™

Safety & Workwear

STANLEY has been committed to providing professionals across the globe with products that are smart, tough, pioneering, and up to the task. Every STANLEY tool is created to help you work better, smarter and faster. Our discovery teams work side-by-side with real tradespeople to see how they work and identify ways to help improve their performance. This means that our workwear comes with something special - understanding. From the boots that protect your feet to the trousers and jackets that keep you warm and comfortable, we create workwear that helps you be your best. Why do we do it? Because we understand that there's nothing better than knowing you've done a great job, and knowing that you're respected for it by the people whose opinion really matters - the people you work with.



TOOLS

TOOLBANK



IRWIN TOOLS manufactures and distributes professional grade hand tools and power tool accessories worldwide for trade professionals who demand superior performance and durability on the job.

**IRWIN TOOLS' brand portfolio features user-preferred category leaders such as
IRWIN®, Vise-Grip®, Quick-Grip®, Strait-Line®, Jack Saws®,
Gilbow®, Marples®, Record®, Jordan® Lenox®**



TOOLBANK



We firmly believe that our tools make life simpler, safer and 'full of joy' for our users.

We shall never be content with existing standards. But unlike others, we do not believe that tools have reached their ultimate stage of development. We are always searching for new ideas. We think differently. We question things.

And in so doing, develop screwdriving tools such as the Zyklop ratchet and the Joker open-end wrench - tools that have turned the familiar into the ordinary.



TOOLS

TOOLBANK



MAKE THE PROFESSIONAL CHOICE

Toolkits that create a safer and more efficient work environment for the user and the organisation alike.



SOCKETS & ACCESSORIES

Sockets made from extra strong chrome vanadium steel and a wide selection of ratchets & accessories



SPANNERS

Manufactured to DIN and ISO standards for quality and size tolerances.



SCREWDRIVERS

Blades have steel alloy wings that the plastic handle is moulded around maximising the torque that can be applied.



INSULATED TOOLS

All VDE insulated tools are individually tested and manufactured to the highest standard, IEC 60 900 & DIN EN 60900.



TORQUE WRENCHES

TengTools have become an industry standard, accurate to $\pm 4\%$ and conform to ISO6789.



Get organised™



WORKSHOP EQUIPMENT C55

The modular workshop that allows you to create a modern work environment customised to fit your space and storage needs.

Choose from a wide range of solutions sharing high quality standards, designed to make the most of your time by optimising your working environment.



Quick release system throughout the length of the drawer



Mobile roller tool cabinet with 2 fixed and 2 steering wheels making it easy to manoeuvre



Aluminium shutter with lock for protecting tools



Drawers can accommodate thermoformed tool trays

www.beta-tools.co.uk

TOOLS



DELIVERING COST
EFFECTIVE MATERIAL
REMOVAL &
CUTTING SOLUTIONS
TO ALL MAJOR
MANUFACTURING
INDUSTRIES ACROSS
THE UK.



CUTTING
TOOLS &
ABRASIVES

TOP QUALITY - NO COMPROMISE

Our products meet the highest demands for precision and longevity with 100% quality control, providing industry solutions for **Grinding, Milling, Drilling, Threading, Sinking, Sawing and Hole Cutting.**

LOCAL

Local sales support
across the UK

SUPPLY

Guaranteed UK distribution
and supply chain

RELIABLE

Successfully serving the UK
market since the early 1970s

Visit us at atagroup.com and karnasch.co.uk

Designing and manufacturing the most comprehensive and advanced range of tungsten carbide burs, pneumatic tools and abrasives to serve the most demanding of industries.



Essential Abrasives

Here at ATA Garryson we offer a comprehensive range of high quality abrasives ranging from flap discs, cutting discs and mounted points, designed for light to heavy material removal, finishing and preparation.



Zirconium Flap Discs

The most popular flap disc due to the self-sharpening action of the cloth. Available from 36 - 120 grit.



Quickchange Discs

The easy locking system gives a quick disc changeover. For general purpose use on ferrous and non-ferrous materials.



Flap Wheels

Typical applications include cleaning weld surfaces, removing die lines, paint or rust removal and sanding. A workshop essential.



Spirabands

Ideal for removing surface defects, machining marks, heavy oxidation, weld splatter and cleaning on all metals.



Shop Rolls

Tough, durable abrasive cloth for a variety of manual cleaning, blending, de-burring and polishing.



Hand Pads

Non-woven hand pads for manual cleaning - wet or dry, and can be cut to size. Removes imperfections without affecting the workpiece.



ATA Garryson and Karnasch Professional Tools, stands for an innovative and diverse product range and professional customer-oriented service. **Made for professionals.**



Carbide Burs and Air Tools

ATA Garryson Carbide Burs are renowned for their consistent high quality and resistance to heat and wear, and our complementary range of quality made Air Tools includes a large range of grinders and sanders.



Double Cut Bur Set GGBKIT28

5 piece set of the most commonly used shapes, designed to give efficient stock removal.



Bolt Remover Kit GGBKIT41

5 piece set designed for the removal of broken studs. Perfect for automotive repair and maintenance.



Alloy Specific Bur Range GGBKIT39

40% more effective material removal, precise control and improved finish on high strength alloys.



Locksmith Set GGBKIT43

Tailor made range developed for the locksmith industry and automotive repair shops.



ATA Die Grinder SMD30LR

Compact and light weight low vibration die grinder. Ergonomically designed moulded sleeve for improved operator comfort.



ATA Small Angle Sander RAM Range

Designed for operator comfort and can be used with burs and quickchange discs,



Karnasch Professional Tools

Using the highest grade materials and coating technology available, KARNASCH high-performance tools are synonymous with quality in professional machining and manufacturing applications.

- Extensive range of high-end precision and industrial cutting tools, all available for immediate delivery.
- Machined using the highest grade tool materials, ensuring product safety, performance and extended tool life.

PRECISION CUTTING TOOLS Milling - Drilling - Sinking - Grinding



One of the world's largest ranges of tools and sets for milling, drilling and countersinking available to order today. With superior quality end mills, spade drills, step drills, countersinks and a comprehensive stock of carbide burs available with tool coating variants BLUE-TEC and BLACK-TEC for optimal machining results.



HOLE SAWS Diameters from 6mm to 305mm



Karnasch has over 1,100 hole saws in the range suitable for hand drills, pillar drilling, radial drilling, lathe or hole cutting machines.

ANNULAR CUTTERS 8mm to 200mm diameters



The annular cutters, rail cutters and twist drills by Karnasch guarantee fast and precise drilling of the highest quality at competitive prices.

MAGNETIC DRILLS Up to 110mm drilling depth



These machines are fitted with a premium quality German motor and a range of added features.

CIRCULAR SAWS 15mm to 2250mm diameters



With the largest range worldwide, Karnasch Professional Tools has over 3,000 different circular saws.

Visit us at atagroup.com and karnasch.co.uk

DORMER PRAMET

A LEADING GLOBAL SUPPLIER OF METAL CUTTING PRODUCTS AND SERVICES

Dormer Pramet is a leading manufacturer and supplier of metal cutting tools. Our global footprint includes more than 20 sales offices, production facilities on three continents and a highly-developed logistics network. With one of the industry's most complete and versatile product programs, we offer an unrivalled range of high quality, fit-for-purpose rotary and indexable tools from one single source.

DRILLING

HSS TiN Straight Shank Jobber Drill (A002)

- HSS TiN Coated Jobber Drill for general machining applications up to x4 diameter
- Titanium Nitride tip coating (2.0mm and above) not only minimises wear and increases tool life, but also allows increased performance
- Features self-centring split-point for excellent positional accuracy and hole quality
- Excellent performance in a wide range of materials
- Improved flute geometry for rapid chip evacuation
- Manufactured to BS328/DIN338 standards
- Available in sizes up to 16.0mm



Benefits

Marking
Readable, marked on the tool for easy identification.

Helix
Optimised for greater stiffness across diameter range.

Finish
Bright body improves performance on ductile materials.

Ground Tool
All surfaces ground for consistent precision.

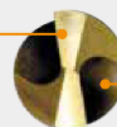
Coating
Titanium nitride resists flank and crater wear and has low friction, promoting increased cutting speeds.

Point Design
Efficient cutting action, reduced axial force, accurate centering.



Scan the QR code for more information on Dormer's A002 HSS Drill.

Web Design
Optimised strength and rigidity, easy to feed.



Flutes
Improved flute geometry for efficient chip form and evacuation.

HSS TiN Straight Shank Jobber Drill Set (A095)

Code	Pieces	Size Range
A095201	19 Piece	1.0mm - 10.0mm x 0.5mm
A095204	25 Piece	1.0mm - 13.0mm x 0.5mm
A095206	29 Piece	1.0mm-13.0mm x 0.5mm +3.3mm, 4.2mm, 6.8mm, 10.2mm
A09518	29 Piece	1/16 inch -1/2 inch x 1/64 inch



HSS Straight Shank Jobber Drill (A100)

- HSS Jobber Drill for general machining applications up to x4 diameter
- Silver ring for easy tool identification and your guarantee of Dormer quality
- 118° point angle
- Steam tempered finish for improved wear resistance
- Manufactured to BS328/DIN338 standards
- Available in sizes up to 20.0mm



HSCo Straight Shank Heavy Duty Jobber Drill (A777)

- HSCo Heavy Duty Straight Shank Jobber Drills for machining higher tensile & tougher materials up to x4 diameter
- 135° split point geometry aids durability and improves hole size, finish and quality
- Bronze finish for easy tool identification
- Manufactured to DIN338 standards
- Available in sizes up to 16.0mm

SUPERCUT

Supercut High Performance, Original, Aerosol and Compound

Supercut, Dormer Pramet's cutting tool lubricant range which is suitable for all of your metal cutting applications. The lubricant is available in standard and chlorine free formulas and comes in fluid (bottle) aerosol (can) or compound (tin) form.

- Excellent cutting performance
- High viscosity formula, excellent adhesion to the tool
- Low odour solvent free formula
- Can be used on all metals
- Increased tool life, better surface finishes and closer tolerances
- Supercut High performance is chlorine free and compatible with water based process fluids
- Supercut Aerosol and Compound have a Chlorine, Sulphur and Phosphorous free formula

Supercut	Code
Original	2F7830400G
High Performance	2F7830340CF
Compound	2F7830450G
Aerosol	2F7830300ML



5PC A002 TiN Coated Jobber Drill Set (A08910)

- Contains: A002 HSS TiN Coated Jobber Drills: 4.0, 5.0, 6.0, 8.0 & 10.0mm



HSS Straight Shank Stub Drill (A120)

- HSS Stub Drill for general machining applications up to x2.5 diameter
- Ideal for use in portable drills, turrets and automatic lathes
- Features self-centring split-point for excellent positional accuracy and hole quality
- Manufactured to DIN1897 standards



HSS Straight Shank Long Series Drill (A110)

- HSS Long Series Drill for general machining applications up to x6 diameter
- Ideal for deeper hole drilling or where a slightly longer reach is required
- Steam tempered finish for improved wear resistance
- Manufactured to DIN340 standards



DORMER PRAMET

COUNTERSINKS

HSS Countersink with Tri-Flat - 90°

- Designed to chamfer holes to accommodate standard fasteners with 90° heads
- 3 Flute, bright finish, ground all over
- Can also be used as a de-burring tool



Code
Countersinks
G1066.3
G1068.3
G10610.4
G10612.4
G10616.5
G10620.5
G10625.0
Set
G2364



6pc Countersink Set (G236)

- Contains 6 x G136 HSS 90° Countersinks
- Countersinks included = 6.3mm, 8.3mm, 10.4mm, 12.4mm, 16.5mm, 20.5mm

BURRS

Double Cut

- First choice for general machining
- Improves ease of control
- Increases metal removal rate
- Breaks swarf into small manageable pieces
- TiN coated burrs available as standard, aluminium geometry burrs available as standard



5 PC Solid Carbide Rotary Burr Set (P88001)

Contains 5 x Solid Carbide Burrs (9.6 x 6.0mm)
 Styles Contained: Cylinder with End Cut (P803), Ball Nosed Cylinder (P805), Ball (P807), Oval (P809) & Pointed Tree (P813)

BOLT REMOVAL KITS

Unique sets for the easy removal of broken bolts

NEW

Ordering Code	Description	Consists of
S-P102M6-M8	Bolt Removal Kit M6-M8	A1173.0, P1004.9, P1014.9, X106XM100NO2
S-P102M8-M10	Bolt Removal Kit M8-M10	A1174.0, P1006.4, P1016.4, X106XM100NO3
S-P102M10-M12	Bolt Removal Kit M10-M11	A1174.2, P1007.8, P1017.8, X106XM100NO3
S-P102M12-M14	Bolt Removal Kit M12-M14	A1176.0, P1009.3, P1019.3, X106XM100NO4
S-P102M14-M16	Bolt Removal Kit M14-M16	A1178.0, P10010.7, P10110.7, X106XM100NO5



Scan the QR code to watch how to safely remove a broken bolt.



This set contains:

- 1 Bolt Milling Burr (P100)
- 1 Bolt Centering Burr (P101)
- 1 Stub Drill HSS-Co (A117)
- 1 Screw Extractor (X106X)



TAPPING

High Quality HSS Hand Taps

- Versatile general purpose taps for threading blind or through holes in most materials
- Suitable for hand or machine use
- Manufactured to ISO529 standards



	E500 (M)	E513 (MF)	E515 (UNC)	E524 (UNF)	E547 (BSP G)
Sizes available:	M1-M56	M3-M50	1-64-2	0-80-1.1/2	1/8-2

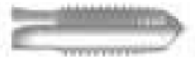
All Dormer Hand Taps are available in either Taper, Second or Plug variants:

Ordering Hand Taps

NO1 = Taper



NO2 = Second



NO3 = Plug



NO6 = Set of 3 (NO1, NO2, NO3)

Available as a 3PC set, E500M3NO6



14PC HSS TiN Coated Jobber Drill & HSS Straight Flute Hand Tap Set (L115101)

- Contains 7 x E500 HSS ISO Hand Taps & equivalent A002 HSS TiN Coated Jobber Drills
- Taps included = M3, M4, M5, M6, M8, M10, M12
- Contains x7 E500-NO3 plug variant straight flute hand taps
- Drills included = 2.5, 3.3, 4.2, 5.0, 6.8, 8.5, 10.2

CUTTING
TOOLS &
ABRASIVES



8913 siacut Cutting Disks



The professional abrasive for higher cutting power

The hard cutting disks of the 8913 siacut Series never fail to impress, with a high cutting power, low level of heat discolouration and reduced burring.

Features:

High cutting speed. Comfortable to use with little contact pressure. Long product life

Applications:

Cutting of pipes and profiles. Cutting of solid materials and bars. Cutting of sheets

Mfct part number	Size (mm)
0020.8716	76x1.0x10.00
0020.8718	100x1.0x16.00
0020.8720	115x1.0x22.23
0020.8721.01	115x1.6x22.23
0020.8722.01	115x2.5x22.23
0020.8724	125x1.0x22.23
0020.8725.01	125x1.6x22.23
0020.8726.01	125x2.5x22.23
0020.8730	230x1.8x22.33
0020.8731	230x2.0x22.33
0020.8732.01	230x2.5x22.33
0020.8733.01	230x3.0x22.33

8933 siagrind Grinding Disks



The hard grinding disks of the special 8933 siagrind series excel in a variety of metal applications and make for robust and efficient tools thanks to features such as high removal rates at low surface pressure and long life.

Features:

High performance for stock removal. Comfortable to use with little contact pressure. Long lifetime

Applications:

Welded seam preparation. Removing solid material

Mfct part number	Size (mm)
0020.8736	230x6.0x22.23
0020.8738.01	115x6.0x22.23
0020.8739.01	125x6.0x22.23
0020.8740.01	180x6.0x22.23
0020.8741.01	230x6.0x22.23

2824 siaflap Flap Discs



A universal abrasive product designed for the surface treatment of unalloyed or low-alloyed steels, the 2824 siaflap flap disc with zirconia corundum and robust cloth backing provides high stock removal rates and long life.

Applications:

Surface finishing, weld removal and preparation, deburring, smoothing and blending flaws

Features:

High performance due to zirconia alumina abrasive grit. Consistent surface quality until the abrasive is completely worn, lower vibration than grinding discs. For market-leading performance in steel applications.

Mfct part number	Size (mm)	Grit
0020.2651	115 x 22mm	40
0020.2653	115 x 22mm	60
0020.2655	115 x 22mm	80
0020.2677	115 x 22mm	120

0020.2657	125 x 22mm	40
0020.2659	125 x 22mm	60
0020.2661	125 x 22mm	80

4819 Zirconia Fibre Discs



The specialist abrasive for unalloyed steels and non-ferrous metals

Specially designed for applications involving steel and non-ferrous metals, 4819 siaron 8 fibre discs achieve, among other things, high stock removal rates and have a long life.

Applications:

Weld preparation. Sanding down. Surface finishing. Deburring, smoothing and blending of flaws. Removing discolouration. Removal of rust

Mfct part number	Size (mm)	Grit
0785.2867.0024	100 x 16mm	24
0785.2867.0036	100 x 16mm	36
0785.2867.0040	100 x 16mm	40
0785.2867.0050	100 x 16mm	50
0785.2867.0060	100 x 16mm	60
0785.2867.0080	100 x 16mm	80
0785.2867.0100	100 x 16mm	100
0785.2867.0120	100 x 16mm	120

7120.5813.0024	115 x 22mm	24
7120.5813.0036	115 x 22mm	36
7120.5813.0040	115 x 22mm	40
7120.5813.0050	115 x 22mm	50
7120.5813.0060	115 x 22mm	60

7120.5813.0080	115 x 22mm	80
7120.5813.0100	115 x 22mm	100
7120.5813.0120	115 x 22mm	120

7340.2591.0024	125 x 22mm	24
7340.2591.0036	125 x 22mm	36
7340.2591.0040	125 x 22mm	40
7340.2591.0050	125 x 22mm	50
7340.2591.0060	125 x 22mm	60
7340.2591.0080	125 x 22mm	80
7340.2591.0100	125 x 22mm	100
7340.2591.0120	125 x 22mm	120

6810.2419.0024	180 x 22mm	24
6810.2419.0036	180 x 22mm	36
6810.2419.0040	180 x 22mm	40
6810.2419.0050	180 x 22mm	50
6810.2419.0060	180 x 22mm	60
6810.2419.0080	180 x 22mm	80
6810.2419.0100	180 x 22mm	100
6810.2419.0120	180 x 22mm	120

4570 siabite X Ceramic Fibre Discs



The fibre disc for the coolest grinding with new and unique X-Technology

Thanks to innovative X-Technology, the 4570 siabite fibre disc brings you considerably cooler grinding with a long service life and a consistent cutting performance on stainless steel and mild steel. With new and unique X-Technology, an active cooling aid is applied directly to the top level, which enhances cooling and minimises discolouration

Applications:

Weld removal. Removal of scale and mill scale. Blending flaws. Removing discolouration

Mfct part number	Size (mm)	Grit
5369.8301.0036	100 x 16mm	36
5369.8301.0060	100 x 16mm	60
5369.8301.0080	100 x 16mm	80
5369.8301.0120	100 x 16mm	120

1737.3366.0036	115 x 22mm	36
1737.3366.0060	115 x 22mm	60
1737.3366.0080	115 x 22mm	80
1737.3366.0120	115 x 22mm	120

1935.3923.0036	125 x 22mm	36
1935.3923.0060	125 x 22mm	60
1935.3923.0080	125 x 22mm	80
1935.3923.0120	125 x 22mm	120

1426.9972.0036	100 x 16mm	36
1426.9972.0060	100 x 16mm	60
1426.9972.0080	100 x 16mm	80
1426.9972.0120	100 x 16mm	120





4581 siaramic X Lock Ceramic Fibre Discs



The ceramic fibre disc for maximum performance on steel

The coarser grits of the 4581 siaramic series are developed for an extraordinarily high stock removal speed on unalloyed/low-alloyed steels. The long lifetime of the disc is an additional benefit of the shaped siaramic grain. Additionally, the ceramic fibre disc distinguishes through a consistent cut in finer grits on unalloyed/low-alloyed steels what results in a superb surface quality.

Applications:

Weld removal. Blending flaws. Removing discolouration. Removal of scale and mill scale

Mfct part number	Size (mm)	Grit
5598.5922.0036.01	100 x 16m	36+
5598.5922.0060.01	100 x 16m	60+
5598.5922.0080.01	100 x 16m	80+

6923.1272.0036.01	115 x 22mm	36+
6923.1272.0060.01	115 x 22mm	60+
6923.1272.0080.01	115 x 22mm	80+

7142.8050.0036.01	125 x 22mm	36+
7142.8050.0060.01	125 x 22mm	60+
7142.8050.0080.01	125 x 22mm	80+

1655.7593.0036.01	180 x 22mm	36+
1655.7593.0060.01	180 x 22mm	60+
1655.7593.0080.01	180 x 22mm	80+

4582 siaramic X Lock Ceramic Fibre Discs



The ceramic fibre disc for maximum performance on stainless steel

The coarser grits of the 4582 siaramic series are developed for an extraordinarily high stock removal speed on stainless steel (thanks to the cooling aid) as well as unalloyed/low-alloyed steels. The long lifetime of the disc is an additional benefit of the shaped siaramic grain.

Features:

Cool cut. Long lifetime. Uniform cutting performance. Fine surface finish. X-LOCK compatible

Applications:

Weld removal. Blending flaws. Removing discolouration. Removal of scale and mill scale

Mfct part number	Size (mm)	Grit
5611.5474.0036.01	100 x 16m	36+
5611.5474.0060.01	100 x 16m	60+
5611.5474.0080.01	100 x 16m	80+
5611.5474.0120.01	100 x 16m	120+

6936.0824.0036.01	115 x 22mm	36+
6936.0824.0060.01	115 x 22mm	60+
6936.0824.0080.01	115 x 22mm	80+
6936.0824.0120.01	115 x 22mm	120+

7155.7602.0036.01	125 x 22mm	36+
7155.7602.0060.01	125 x 22mm	60+
7155.7602.0080.01	125 x 22mm	80+
7155.7602.0120.01	125 x 22mm	120+

1690.3366.0036.01	180 x 22mm	36+
1690.3366.0060.01	180 x 22mm	60+
1690.3366.0080.01	180 x 22mm	80+
1690.3366.0120.01	180 x 22mm	120+

2829 Zirconia Cloth File Belts



The special belt sanding series for coarse dry sanding

The special 2829 siaron y series is ideal for unalloyed steels and non-ferrous metals in stationary belt sanding applications and in applications involving the use of powerfile sanders. It ensures an excellent finish without sacrificing such advantages as high stock removal rates, high edge stability or tear resistance.

Backing with very high stability and rigidity

Active additives with a cooling effect greatly reduce discolouration. Suitable for general use in dry and wet sanding applications

Applications:

Weld preparation. Removing discolouration. Sanding down. Surface finishing. Deburring. Smoothing and blending of flaws

Mfct part number	Size (mm)	Grit
7213.5249.0036	10 x 330mm	36
7213.5249.0040	10 x 330mm	40
7213.5249.0060	10 x 330mm	60
7213.5249.0080	10 x 330mm	80
7213.5249.0100	10 x 330mm	100
7213.5249.0120	10 x 330mm	120

0545.3697.0036	12 x 305mm	36
0545.3697.0040	12 x 305mm	40
0545.3697.0060	12 x 305mm	60
0545.3697.0080	12 x 305mm	80
0545.3697.0100	12 x 305mm	100
0545.3697.0120	12 x 305mm	120

3828.2548.0036	12 x 457mm	36
3828.2548.0040	12 x 457mm	40
3828.2548.0060	12 x 457mm	60
3828.2548.0080	12 x 457mm	80
3828.2548.0100	12 x 457mm	100
3828.2548.0120	12 x 457mm	120

7137.3854.0036	12 x 610mm	36
7137.3854.0040	12 x 610mm	40
7137.3854.0060	12 x 610mm	60
7137.3854.0080	12 x 610mm	80
7137.3854.0120	12 x 610mm	100
7137.3854.0120	12 x 610mm	120

2820 siamet Zirconia Spirabands



SIA 2820 Zirconia Spirabands are perfect for deburring and dressing of mild steel tubing and hard to reach areas. Featuring an X-wt Cloth/ Cotton backing and using active additives to help with grinding properties, the SIA 2820 Spiraband is a dynamic and adaptable abrasive

Features:

The abrasive used is Zirconia giving long life on steels and stainless steels

Applications:

Blending and shaping holes and grooves cut into materials to the correct shape & general deburring

Mfct part number	Size (mm)	Grit
6165.9712.0050	Ø 10/20mm (dia/width)	50
6165.9712.0060	Ø 10/20mm (dia/width)	60
6165.9712.0080	Ø 10/20mm (dia/width)	80

5476.2604.0050	Ø 15/30mm (dia/width)	50
5476.2604.0060	Ø 15/30mm (dia/width)	60
5476.2604.0080	Ø 15/30mm (dia/width)	80

1111.8190.0036	Ø 25/25mm (dia/width)	36
1111.8190.0050	Ø 25/25mm (dia/width)	50
1111.8190.0060	Ø 25/25mm (dia/width)	60
1111.8190.0080	Ø 25/25mm (dia/width)	80

5784.2604.0036	Ø 30/30mm (dia/width)	36
5784.2604.0050	Ø 30/30mm (dia/width)	50
5784.2604.0060	Ø 30/30mm (dia/width)	60
5784.2604.0080	Ø 30/30mm (dia/width)	80

6113.6717.0036	Ø 45/30mm (dia/width)	36
6208.6433.0050	Ø 45/30mm (dia/width)	50
6113.6717.0060	Ø 45/30mm (dia/width)	60
6208.6433.0080	Ø 45/30mm (dia/width)	80

1665.6836.0036	Ø 51/25mm (dia/width)	36
1665.6836.0050	Ø 51/25mm (dia/width)	50
1665.6836.0060	Ø 51/25mm (dia/width)	60
1665.6836.0080	Ø 51/25mm (dia/width)	80



2923 Cloth Spindle Mounted Flap Wheels



The dependable series for grinding of unalloyed and non-ferrous steel

As a cost-effective abrasive with a stable cloth backing, 2923 sialoX offers aggressive finish, good tear resistance and particularly long service life in a variety of applications including final grinding of unalloyed steel and non-ferrous metals

Applications:

Wide range of applications. Highly flexible, ideal for hard to reach areas. Excellent price/performance ratio. Versatile all-round product with an attractive range of options. Universal product for all metals



Mfct part number	Size (mm)	Grit
0020.8274.01	Ø 20/10mm (dia/width)	40
0020.8275.01	Ø 20/10mm (dia/width)	60
0020.8276.01	Ø 20/10mm (dia/width)	80
0020.8277.01	Ø 20/10mm (dia/width)	120
0020.8278.01	Ø 20/10mm (dia/width)	150

0020.8299.01	Ø 30/15mm (dia/width)	40
0020.8300.01	Ø 30/15mm (dia/width)	60
0020.8301.01	Ø 30/15mm (dia/width)	80
0020.8302.01	Ø 30/15mm (dia/width)	120
0020.8303.01	Ø 30/15mm (dia/width)	150

0020.8309.01	Ø 40/20mm (dia/width)	40
0020.8310.01	Ø 40/20mm (dia/width)	60
0020.8311.01	Ø 40/20mm (dia/width)	80
0020.8312.01	Ø 40/20mm (dia/width)	120
0020.8313.01	Ø 40/20mm (dia/width)	150

0020.8324.01	Ø 50/25mm (dia/width)	40
0020.8325.01	Ø 50/25mm (dia/width)	60
0020.8326.01	Ø 50/25mm (dia/width)	80
0020.8327.01	Ø 50/25mm (dia/width)	120
0020.8328.01	Ø 50/25mm (dia/width)	150

0020.8334.01	Ø 60/15mm (dia/width)	40
0020.8335.01	Ø 60/15mm (dia/width)	60
0020.8336.01	Ø 60/15mm (dia/width)	80
0020.8337.01	Ø 60/15mm (dia/width)	120
0020.8338.01	Ø 60/15mm (dia/width)	150

0020.8344.01	Ø 60/30mm (dia/width)	40
0020.8345.01	Ø 60/30mm (dia/width)	60
0020.8346.01	Ø 60/30mm (dia/width)	80
0020.8347.01	Ø 60/30mm (dia/width)	120
0020.8348.01	Ø 60/30mm (dia/width)	150

1713 siawat Wet & Dry Sheet



For the highest-performance wet sanding materials

The 1713 siawat silicon carbide series makes all the difference when it comes to sanding coatings, impurities or

unevenness in edge zones and when fine sanding primer fillers, glass, composite

Features:

High performance for stock removal with good finish. Long lifetime. Powerful silicon carbide grit for use on hard materials. Highly adaptable to contours and shapes. Can be used wet or dry

Applications:

Sanding off coatings and impurities. Sanding out unevenness at the edges of repaired surfaces. Flattening bodyfiller and primer filler. Fine sanding primer filler, glass, composite. Keying old and new lacquers. Removing paint runs

Mfct part number	Size (mm)	Grit
8729.6054.0080	230 x 280mm	80
8729.6054.0100	230 x 280mm	100
8729.6054.0120	230 x 280mm	120
8729.6054.0150	230 x 280mm	150
8729.6054.0180	230 x 280mm	180
8729.6054.0220	230 x 280mm	220
8729.6054.0240	230 x 280mm	240
8729.6054.0280	230 x 280mm	280
8729.6054.0320	230 x 280mm	320
8729.6054.0360	230 x 280mm	360
8729.6054.0400	230 x 280mm	400
8729.6054.0500	230 x 280mm	500
8729.6054.0600	230 x 280mm	600
8729.6054.0800	230 x 280mm	800
8729.6054.1000	230 x 280mm	1000
8729.6054.1200	230 x 280mm	1200
8729.6054.1500	230 x 280mm	1500
8729.6054.2000	230 x 280mm	2000
8729.6054.2500	230 x 280mm	2500

1950 siaspeed S Performance Discs Paper



For a perfect finish at full speed

The versatile all-round product 1950 siaspeed is specially designed for high stock removal rates, perfect surface quality and long life in applications such as the surface treatment of body filler, primer filler, lacquers and paints, composites

Features:

Increased occupational health and safety due to dust free sanding. Higher productivity and process improvement. Improved cut, stock removal and overall life & performance

Advantages:

Very high abrasive performance with a good finish. Performance-enhancing grit mix with ceramic corundum in 40 - 80 grit range. Minimal clogging thanks to open coating in 220 - 600 grit range. Extremely long lifetime leads to lower abrasive consumption. Versatile all-round product with an attractive range of options

Mfct part number	Size (mm)	Grit
1546.3150.0040	150mm	40
1546.3150.0060	150mm	60
1546.3150.0080	150mm	80
8443.7842.0100	150mm	100
8443.7842.0120	150mm	120
8443.7842.0150	150mm	150
8443.7842.0180	150mm	180
8443.7842.0220	150mm	220
8443.7842.0240	150mm	240
8443.7842.0280	150mm	280
8443.7842.0320	150mm	320
8443.7842.0400	150mm	400
8443.7842.0500	150mm	500
8443.7842.0600	150mm	600

1944 siaone Discs Paper 15 hole



The quality with aggressive cut and optimum lifetime. For price-conscious users for working with various materials, for example: bodyfiller, primer filler, varnish, paint and wood. Velcro type backing and an aluminium oxide open coating. Dry sanding, suitable for a broad range of application, stearate coating reduces clogging.

Advantages:

Aggressive initial sanding thanks to optimised sanding grain. Process stability thanks to uniform scratch depths in all grits. Excellent price/performance ratio

Mfct part number	Size (mm)	Grit
7425.4595.0040	150mm	40
7425.4595.0060	150mm	60
7425.4595.0080	150mm	80
7425.4595.0120	150mm	120
7425.4595.0150	150mm	150
7425.4595.0180	150mm	180
7425.4595.0240	150mm	240
7425.4595.0320	150mm	320
7425.4595.0400	150mm	400
7425.4595.0500	150mm	500

7900 sianet discs



The powerful net-backed abrasive

The special net structure of 7900 sianet enables dust-free sanding with the highest abrasive performance on all types of materials

Advantages:

Full-surface dust extraction. High removal rate without clogging. Very efficient and productive. High tear resistance, thanks to sturdy net backing

Mfct part number	Size (mm)	Grit
6397.0967.0080	150mm	80
6397.0967.0100	150mm	100
6397.0967.0120	150mm	120
6397.0967.0180	150mm	180
6397.0967.0240	150mm	240
6397.0967.0320	150mm	320
6397.0967.0400	150mm	400



1815 siatop Zirconia discs



For fast and cost-effective surface treatment of steel and non-ferrous metals

1815 siatop impresses with its high removal rate, long lifetime and very good finish in a wide range of disc and belt applications

Applications:

Removal of paint or rust. Weld preparation. Removing discolouration. Sanding down. Deburring

Advantages:

Versatile all-round product with an attractive range of options. Outstanding performance in dry sanding applications. Cost reduction thanks to long lifetime

Mfct part number	Size (mm)	Grit
4418.9881.0024	150mm	24
4418.9881.0036	150mm	36
4418.9881.0040	150mm	40
4418.9881.0050	150mm	50
4418.9881.0060	150mm	60
4418.9881.0080	150mm	80
4418.9881.0100	150mm	100
4418.9881.0120	150mm	120
4418.9881.0150	150mm	150

2820 siafix Quick Change Zirconium Discs



As a specialist product designed for dry sanding with high removal rates as well as excellent edge stability and tear resistance, 2820 siamet is suitable for a wide variety of jobs ranging from removal of rust or paint to welding preparation – whether on unalloyed steels or non-ferrous metals.

Application

Dressing of mild steel weld seams and joints in hard to reach areas or small parts

Advantages

Fast safe and easy discs change offered by the siafix quick change system

Mfct part number	Size (mm)	Grit
4917.8786.0040	50mm	40
4917.8786.0050	50mm	50
4917.8786.0060	50mm	60
4917.8786.0080	50mm	80
4917.8786.0120	50mm	120
4917.8786.0240	50mm	240
4917.8786.0320	50mm	320

5445.4510.0036	76mm	36
5445.4510.0040	76mm	40
5445.4510.0060	76mm	60
5445.4510.0080	76mm	80
5445.4510.0120	76mm	120
5445.4510.0180	76mm	180
5445.4510.0320	76mm	320

2511 siafix Quick Change Ceramic Discs



2511 siabite quick change discs are designed for mini grinders and provide maximum efficiency on high-alloy steel and other hard to grind metals thanks to the self-sharpening effect of the ceramic grit.

Applications:

Weld preparation. Sanding down small parts. Deburring. Smoothing and blending of flaws. Removing discolouration. Surface finishing

Advantages:

Less machine interruptions thanks to long lifetime. Minimal effort required thanks to highly aggressive abrasive grit. Reduced heat cutting thanks to active additive with cooling effect. More efficiency thanks to the highest performance

Mfct part number	Size (mm)	Grit
8185.7250.0040	50mm	40
0002.1244 / 8185.7250.0050	50mm	50
0002.1245 / 8185.7250.0060	50mm	60
0002.1246 / 8185.7250.0080	50mm	80
8185.7250.0120	50mm	120

0002.1247 / 8734.9195.0036	76mm	36
0002.1248 / 8734.9195.0040	76mm	40
0002.1248 / 8734.9195.0050	76mm	50
0002.1249 / 8734.9195.0060	76mm	60
0002.1250 / 8734.9195.0080	76mm	80
8734.9195.0120	76mm	120

siafix Quick Change Backing Pads



Mfct part number	Size (mm)
0002.2210	25mm
0020.8066	50mm
0020.8069.01	76mm

6270 Surface Conditioning Discs



The new 6270 SCM range with high-performance blue fired aluminium oxide grain and improved low stretch scrim helps deliver longer lifetime and faster working in both discs and belts.

Features:

Excellent and consistent finish over a long period of time. More durable so more resistant on edges. Suitable for general use in dry and wet sanding applications. Considerably more resistant to smearing than existing products; especially at the edge of the disc when working at tight angles

Applications:

Deburring. Removing rust and paint. Removing discolouration. Surface finishing. Finishing to prepare for coating and electroplating

Mfct part number	Size (mm)	Grit
6335.2710.2921	50mm	Coarse A
6335.2710.4921	50mm	Medium A
6335.2710.5921	50mm	Fine A
6335.2710.6921	50mm	Very Fine A

6884.4655.2921	76mm	Coarse A
6884.4655.4921	76mm	Medium A
6884.4655.5921	76mm	Fine A
6884.4655.6921	76mm	Very Fine A



Mfct part number	Size (mm)	Grit
4441.6601.2921	100x 16mm	Coarse A
4441.6601.4921	100x 16mm	Medium A
4441.6601.5921	100x 16mm	Fine A
4441.6601.6921	100x 16mm	Very Fine A

4892.0370.2921	115 x 22mm	Coarse A
4892.0370.4921	115 x 22mm	Medium A
4892.0370.5921	115 x 22mm	Fine A
4892.0370.6921	115 x 22mm	Very Fine A

6120 siafleece Hand Pads



For even surface finishes 6120 siafleece can be used for dry and wet sanding and impresses due to its high conformability, consistent performance over the entire lifetime, low tendency to clog, and consistently high surface quality

These high quality hand pads are an excellent performer for metal finishing and are constructed in such a way that the grit fully penetrates the whole of the non-woven fibres which gives extended life to the product and better value for money.

Applications:

Blending and regraining. Removing discolouration. Structuring/finishing. Cleaning of flat or contoured surfaces

Mfct part number	Size (mm)	Grit
4132.9840.2922.52	152 x 229mm	Extra Cut
4132.9840.4721.37	152 x 229mm	Med S

4132.9840.6923	152 x 229mm	General Purpose
4132.9840.6921.13	152 x 229mm	Very Fine A
4132.9840.8715.12	152 x 229mm	Ultra Fine S



We pioneer motion

Mounting, dismounting, maintenance and lubrication



For every step of your bearing's life.

The correct mounting and dismounting of rolling bearings can save time and dramatically increase the life of bearings, as well as maximising the availability of critical plant and machinery by avoiding costly breakdowns. Correct alignment and lubrication can achieve improved energy efficiency of machines and equipment.

www.schaeffler.co.uk

SCHAEFFLER



We pioneer motion

Reliable tools for mounting and dismounting

Mounting and dismounting of rolling bearings

For the economical and secure mounting of rolling bearings Schaeffler provides various devices as well as mounting paste for the mounting of bearings in all designs using mechanical, thermal and hydraulic methods.

Schaeffler also offers a mounting service with experts who have detailed knowledge and extensive experience in all industrial sectors.

The on-line Mounting Manager is available for the correct mounting of bearings with tapered bore and is accessed via our website and Medias.

www.schaeffler.co.uk

SCHAEFFLER

We pioneer motion

Induction heating devices for safe and reliable mounting of bearings



Your benefits

- User-friendly operation via modern touch screen
- More productivity with time savings of 30-50%
- Energy consumption cut by up to 50%

Features

- Automatic power regulation and sensor detection
- The heating process can be documented
- Four different heating modes
- Delta T control ensures safe heating of bearings

www.schaeffler.co.uk

SCHAEFFLER

We pioneer motion

CONCEPT Series refillable auto lubricators



Savings for the planet and in your pocket too.

The CONCEPT series from Schaeffler with 1 to 8 lubrication points, helping reduce your environmental impact.

Flexible : CONCEPT refillable cartridges for your choice of lubricant.

Environmentally friendly : As the cartridges can be filled up to three times, plastic waste is reduced.

Easily re-filled : using either a grease gun or from a barrel.

www.schaeffler.co.uk

SCHAEFFLER

We pioneer motion

Lubrication



Arcanol rolling bearing greases.

The correct choice of lubricant has a significant influence on the function and lifespan of a rolling bearing. Schaeffler Arcanol greases offer superior performance and are divided into four groups:

- Multi-purpose greases: for a wide range of applications
- Heavy-duty greases: for particularly high demands on load carrying capacity
- High-temperature greases: for operating temperatures up to 200° C
- Special greases: for specific application requirements

www.schaeffler.co.uk

SCHAEFFLER

We pioneer motion

Grease selection for typical applications

Designation	Characteristic applications	Operating temperature °C		Continuous limit temperature	Thickener	Base Oil	Consistency NLGI	Base oil viscosity at +40°C mm²/s	Temperatures		Low friction, high speed	High load, low speed	Vibrations	Support for seals	Relubrication facility	
		From	To						High	Low						
Multipurpose greases	MULTITOP	Ball and roller bearings in rolling mills, construction machinery, automotive engineering, spinning and grinding spindles	-501	+140	+80	Lithium soap	Partially synthetic oil	2	82	++	+	+	++	+	•	++
	MULTI2	Ball bearings up to 62 mm outside diameter in small electric motors, agricultural and construction machinery, household appliances	-30	+120	+75	Lithium soap	Mineral oil	2	110	+	•	•	•	•	•	++
	MULTI3	Ball bearings from 62 mm outside diameter in large electric motors, agricultural and construction machinery, ventilators	-30	+120	+75	Lithium soap	Mineral oil	3	80	+	•	•	•	+	+	+
High Loads	LOAD150	Ball, roller, and needle roller bearings, linear guidance systems in machine tools	-20	+140	+95	Lithium complex soap	Mineral oil	2	160	•	+	—	++	+	+	+
	LOAD220	Ball and roller bearings in rolling mills, rail vehicles, paper machinery	-20	+140	+80	Lithium/calcium soap	Mineral oil	2	245	•	+	—	++	+	+	+
	LOAD400	Ball and roller bearings in mining machinery, construction machinery, main bearings for wind turbines	-40	+130	+80	Lithium/calcium soap	Mineral oil	2	400	•	•	—	++	+	+	+
	LOAD460	Ball and roller bearings, wind turbines, bearings with pin-type cage	-401	+130	+80	Lithium/calcium soap	Mineral oil	1	400	+	•	—	++	+	—	+
	LOAD1000	Ball and roller bearings in mining machinery, construction machinery, cement plants	-301	+130	+80	Lithium/calcium soap	Mineral oil	2	1000	•	•	—	++	+	+	+
High temperature ranges	TEMP90	Ball and roller bearings in clutches, electric motors, automotive engineering	-40	+160	+90	Poly-carbamide	Partially synthetic oil	3	148	++	+	•	•	•	+	+
	TEMP110	Ball and roller bearings in electrical equipment, automotive engineering	-35	+160	+110	Lithium complex soap	Partially synthetic oil	2	130	++	++	+	•	•	•	•
	TEMP120	Ball and roller bearings in continuous casting plants, paper machinery	-30	+180	+120	Poly-carbamide	Synthetic oil	2	400	+	++	—	++	•	+	•
	TEMP200	Ball and roller bearings in guide rollers in baking machinery, kiln trucks and chemical plants, piston pins in compressors	-30	+260	+200											
	PTFE	Alkoxy fluoro oil	2	550	+	++	—	+	•	•	•					
Special greases	SPEED2,6	Ball bearings in machine tools, spindle bearings, rotary table bearings, instrument bearings	-40	+120	+80	Lithium complex soap	Synthetic oil	2 – 3	25	++	•	++	—	—	•	•
	VIB3	Ball and roller bearings in blade adjusters in wind turbine rotors, packaging machinery, rail vehicles	-30	+150	+90	Lithium complex soap	Mineral oil	3	170	+	+	—	+	++	+	—
	FOOD2	Ball and roller bearings in applications with food contact (NSF-H1 registration, kosher and halal certification)	-30	+120	+70	Aluminum complex soap	Synthetic oil	2	150	+	—	•	•	•	•	++
	CLEAN-M	Ball, roller, and needle roller bearings as well as linear guidance systems in clean room applications	-30	+180	+90	Poly-carbamide	Ether oil	2	103	++	++	•	•	•	•	+
	MOTION2	Ball and roller bearings in oscillating operation, slewing rings in wind turbines	-40	+130	+75	Lithium soap	Synthetic oil	2	50	++	•	—	+	++	+	•

We pioneer motion

Condition Monitoring Products to increase plant availability



As you are aware associated costs of downtime can range from £15,000 per hour for a cement plant, to £60,000 per hour for a steel mill. Machines that are not monitored at all, or only monitored manually, are an uncontrolled risk.

With experience in machine building and manufacturing of rotating products, Schaeffler has specialist knowledge when it comes to monitoring machines. With a portfolio of condition monitoring (CM) products and industry 4.0 service solutions Schaeffler's goal is to enable the monitoring of all machines in an affordable way.

www.schaeffler.co.uk

SCHAEFFLER

We pioneer motion

SmartCheck



FAG SmartCheck is a cost-effective, innovative online measuring system for the continuous monitoring of machine and process parameters on a decentralised basis. It offers the performance features of expensive systems but is compact in design, easy to fit and simple to use.

The SmartCheck is suitable for early detection of rolling bearing damage, imbalances and misalignments on electric and geared motors, vacuum and fluid pumps, ventilators and fans, gearboxes and compressors, spindles and machine tools.

www.schaeffler.co.uk

SCHAEFFLER

MAINTENANCE
& CONDITION
MONITORING

We pioneer motion

ProLink CMS versatile, modular and easy to integrate



The ProLink multi-channel condition monitoring system for continual machine monitoring via vibration measurement.

- Templates for monitoring rolling bearings, motors, gearboxes, fans, and pumps that make further configuration easier.
- The learning mode allows for adjustments to alarm thresholds to optimise monitoring
- Optional use of the ConditionAnalyzer via the integrated cloud interface.

www.schaeffler.co.uk

SCHAEFFLER

We pioneer motion

OPTIME Plug - Play - Predict



OPTIME is a high scale monitoring solution allowing for comprehensive condition monitoring that is both easy and affordable. It's simple plug & play installation, allows you to start monitoring hundreds of rotating machines in just a few hours. With the ability to work on almost all machines, OPTIME can detect potential damage, imbalances or misalignments – even weeks in advance.

www.schaeffler.co.uk

SCHAEFFLER

MAINTENANCE
& CONDITION
MONITORING

The Engineer's Tool Kit



SIP Stock a wide range of Premium Brands, all of which come with a 3 YEAR WARRANTY.



www.sip-group.com

DeWALT

WORKSHOP FANS, AIR MOVERS & WET/DRY VACUUMS

SIP is a distributor for DeWALT Wet/Dry Vacuums and Industrial Air products



Helvi
FROM SIP

INDUSTRIAL
WELDING
EQUIPMENT

ARC/MMA Welders • TIG Inverter Welders
MIG Transformer Based Welders • MIG Inverter Welders
MIG Multi-Process Welders • Plasma Cutters



NARDI Compressori
INDUSTRIAL OIL-FREE
AIR COMPRESSORS



LOW PRESSURE COMPRESSORS | HIGH PRESSURE BREATHING COMPRESSORS | DENTAL COMPRESSORS | NITROGEN BOOSTERS | CNG COMPRESSORS

aer  service
FROM SIP

PROFESSIONAL EXHAUST GAS FUME EXTRACTORS



**BOOSTER PACKS, BATTERY SUPPORT UNITS,
BATTERY CHARGERS & STARTERS, BATTERY TESTERS & SCANNERS**



MAINTENANCE
& CONDITION
MONITORING



AUTOMOTIVE & COMMERCIAL LIFTING EQUIPMENT



WINNTEC
FROM SIP
**3 YEARS
WARRANTY**
INCLUDES WEAR AND TEAR



SIP INDUSTRIAL PRODUCTS LIMITED

For over 50 years, SIP Industrial Products Limited, has been a flagship supplier of high quality equipment and machinery to the ever-growing, engineering, construction, automotive & agricultural marketplaces.



AIR COMPRESSORS



STARTERS & BOOSTER PACKS



PRESSURE WASHERS



CLEANING



WATER PUMPS



AUTOMOTIVE & LIFTING



HEATING



WELDING & METALWORK



WOODWORKING

sip
SIP INDUSTRIAL

SIP (INDUSTRIAL PRODUCTS) LIMITED

www.sip-group.com



MAINTENANCE
& CONDITION
MONITORING

Tel: +44 (0)1299 266 800
UK & IRELAND SALES Tel: 01299 269 500
Email: info@parweld.co.uk

parweld
WELDING THE FUTURE



MIG INVERTER WELDING MACHINES

XTM 211Di 4in1

KEY FEATURES

Large high quality colour screen with multi language easy to follow digital interface.
View and adjust machine parameters from the MIG and TIG torch handle.
HF Start TIG.
Instant swapping between MIG and TIG process with one touch of the torch trigger.
Rapid synergic setup for MIG, TIG and MMA.
MIG Weld, down to 0.9mm thick material.
Memory function for all processes to save and recall welding programs.
Pulse TIG function for superior arc control.
5 kg and 15 kg (300mm) Spool Size.
Welding Capacity (230V input).

DESIGNED & QUALITY ASSURED
BY PARWELD ENGLAND UK



DUAL VOLTAGE
INSTANT SWAPPING
BETWEEN PROCESSES
RAPID SYNERGIC SETUP
FOR MIG, TIG & MMA
LARGE HIGH QUALITY
COLOUR SCREEN



MULTI PROCESS
MIG/MMA/ LIFT TIG
SYNERGIC CONTROL
DUAL DIGITAL
DISPLAY

XTM 201i

KEY FEATURES

230V single phase.
200A @ 25% duty cycle.
Compact and portable.
Synergic MIG.
Lift TIG and MMA.
Accepts 5kg (200mm) spools.
IP23S.
Supplied with 3m Earth Lead.
2T/4T trigger latching.



SINGLE PHASE
EURO TORCH
CONNECTOR
2 ROLL METAL
FEED BOX
8 VOLTAGE STEPS

XTE 201C

KEY FEATURES

230V single phase.
205A @ 15% duty cycle.
2 Roll drive.
Forced air fan cooling.
Infinitely variable wire speed.
Overload warning indicator.
Polarity can be changed for gas-less welding.
Stand for gas cylinder (half bottle).
Holds 5 kg and 15 kg wire spools.
Built-in gas valve.

MESH BACK DRIVERS GLOVE



COW GRAIN LEATHER
STOCK CODE P3854
SIZE 10

PANTHER GAUNTLET



COW SPLIT LEATHER
STOCK CODE P3825
SIZE 10

PANTHER PRO TIG GLOVE



GOAT SKIN WITH COW HIDE
CUFF AND REAR
STOCK CODE P3839
SIZE 10

CANADIAN RIGGER GLOVE



COW SKIN & COTTON
STOCK CODE P3805
SIZE 10

PRO LONG SLEEVE GAUNTLET



COW GRAIN LEATHER
STOCK CODE P3822
SIZE 10

Tel: +44 (0)1299 266 800
UK & IRELAND SALES Tel: 01299 269 500
Email: info@parweld.co.uk

parweld
WELDING THE FUTURE



parweld.com



@ParweldLtd



ParweldTV



[parweld_uk](https://www.instagram.com/parweld_uk)

TIG WELDING MACHINES

DESIGNED & QUALITY ASSURED
BY PARWELD ENGLAND UK

XTT 207 DV

KEY FEATURES

Pulse function for superior arc control.
Dual voltage 110-230V 1P.
Lightweight 8 kg.
200A @ 35% duty cycle.
Generator friendly.
Adjustable TIG parameters.
Supplied with 3m earth lead.
Adjustable down slope option (TIG mode).
Connections 35-50mm dinse.



TIG WELDS STEEL & STAINLESS STEEL TO 6MM
DUAL VOLTAGE 110/230V
PULSE FUNCTION FOR SUPERIOR ARC CONTROL

XTT 212P AC/DC

KEY FEATURES

Pulse function for superior arc control.
110V or 230V Input.
TIG welds any metal up to 6mm.
Square wave AC TIG.
Variable frequency for faster welding.
Reduced footprint.



110V OR 230V INPUT
TIG WELDS ANY METAL UP TO 6MM
SQUARE WAVE AC TIG
PULSE FUNCTION TO SUPERIOR ARC CONTROL

MMA WELDING MACHINES

XTS 163

KEY FEATURES

230V input.
Lightweight 4.7 kg.
160A @ 25% duty cycle.
Electrode striking with arc force and re-striking with hot start.
Supplied with electrode holder, 3m cable & 3m earth lead.
Connections 35-50mm dinse.
Digital amperage display.
Over voltage and over current protection.



DIGITAL DISPLAY FOR EASY SETTING
GENERATOR FRIENDLY
LIFT ARC TIG

XTS 204

KEY FEATURES

230V input.
200A @ 25% duty cycle.
Generator friendly.
Easy electrode striking with arc force & re-striking with hot start.
Supplied with electrode holder, 3m cable & 3m earth lead.
Connections 35-50mm dinse.
Over voltage and over current protection.



DIGITAL DISPLAY FOR EASY SETTING
LIFT ARC TIG MODE

INVERTER PLASMA CUTTER MACHINES

XTP 40

KEY FEATURES

Lightweight 12.6 kg.
40A @ 40% duty cycle.
Generator friendly.
Smart switching dual voltage 110-230V.
Ideal for mesh cutting.
Supplied with XT4000 plasma torch x 6m and 3m earth cable.
Auto over voltage and over current protection.
Includes built-in air pressure regulator.



CUTS ANY METAL
12MM PRODUCTION CUT
20MM SEVERANCE CUT
DUAL VOLTAGE 110/230V

XTP 63

KEY FEATURES

400V 3 phase.
Lightweight 13 kg.
60A @ 40% duty cycle.
Generator friendly.
Ideal for mesh cutting.
Supplied with XT4000 plasma torch 6m and 3m earth cable.
Auto over voltage and over current protection.
Includes built-in air pressure regulator and pressure gauge.



CUTS ANY METAL
20MM PRODUCTION CUT
30MM SEVERANCE CUT
COMPACT AND LIGHTWEIGHT

WELDING

Tel: +44 (0)1299 266 800
UK & IRELAND SALES Tel: 01299 269 500
Email: info@parweld.co.uk

parweld
WELDING THE FUTURE



parweld.com

@ParweldLtd

ParweldTV

[parweld_uk](https://www.instagram.com/parweld_uk)

DESIGNED & QUALITY ASSURED
BY PARWELD ENGLAND UK

WELDING AND GRINDING HELMETS

XR935H



EVERYDAY LIGHT
REACTIVE

KEY FEATURES

Automatic light adjustment from light to dark in 1/30,000th of a second.
Shade control from DIN9-13.
Variable sensitivity.
Grinding mode.
Variable delay.
Viewing area 100mm x 41mm (3.94 x 1.62").
Full face coverage.
Automatic power on/off.
Built-in battery.
UV/IR protection up to shade DIN 16.
12 Months warranty.

XR939H



TRUE COLOUR
LIGHT REACTIVE

KEY FEATURES

ADF flips up inside helmet.
Automatic darkening.
Variable shade 4-to-13.
ADF exceptional clarity and optical quality rated 1/1/1/1 EN 379.
External controls.
Variable sensitivity and delay.
Automatic on and off, solar cells and built-in battery.
Front visor for high impact protection.
Clear state 3.0 for exceptional pre-weld clarity.
24 Months warranty.

XR938H (6 colour options)



TRUE COLOUR
LIGHT REACTIVE

KEY FEATURES

True colour lens.
Slim and lightweight.
Automatic light adjustment from light to dark in 1/30,000th of a second.
Shade control from DIN5-13.
Variable sensitivity.
Grinding mode.
Variable delay.
Viewing area 100 x 52mm (3.94 x 2.05").
Suitable for TIG welding.
Automatic power on/off.
24 Months warranty.

POWERED AIR PURIFYING RESPIRATOR (PAPR)



PAPR COMES WITH A TWO HELMET OPTION

Supplied with either a
XR950A (XR1052)
Flip Filter Helmet or
XR940A (XR1002)
Large View Welding Helmet

TH3P R SL particulate filter removes 99.8% of welding fume particulates, dust, smoke and aerosol.

XR950A
FLIP FILTER

XR940A
LARGE VIEW

Tel: +44 (0)1299 266 800
UK & IRELAND SALES Tel: 01299 269 500
Email: info@parweld.co.uk

parweld
WELDING THE FUTURE



parweld.com

@ParweldLtd

ParweldTV

[parweld_uk](https://www.instagram.com/parweld_uk)

MIG, TIG & PLASMA TORCH RANGE

DESIGNED & QUALITY ASSURED
BY PARWELD ENGLAND UK



Parweld's torch range features a number of important factors which are fundamental to the functionality, usability, and service life of our torches.

Ergonomically Superior Handle Designs

Cable Supports combine the ultimate in balance, positioning, and ergonomics.

Cable Systems

Hyper-flex® coaxial cable offers outstanding flexibility and the highest heat and abrasion resistance specification.

(See website for full range of torches)



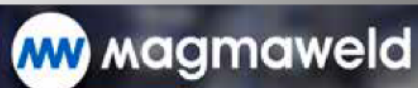
GAS CUTTING EQUIPMENT

A wide range of gas cutting and welding equipment including regulators, torches, nozzles and accessories.



WELDING
WIRE

OFFICIAL UK SUPPLIER FOR RUKO AND MAGMAWELD



WELDING



Founded in 1991 and celebrating our 30th anniversary, Specialised Welding Products (SWP) is firmly established as one of the UK's leading suppliers of Welding and Safety Equipment, whilst maintaining core beliefs of Quality, Service and Value, delivered by a dedicated team with extensive product knowledge.

Our new 2,332m² National Distribution Centre is based in Haydock, just off the M6 at Junction 23, where we stock over 10,000 products. From here you can collect your orders personally at the Trade Counter or order by phone, online or via our app up to 7pm for next day nationwide delivery of quality products allied to the welding industry – and beyond.



PRODUCT BRANDS

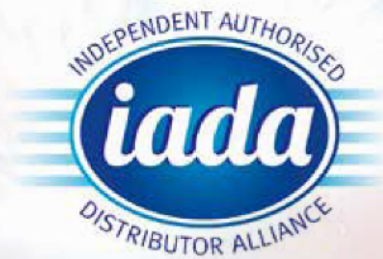
We offer a range of our own brands to provide the welder with a choice of products based on their quality and price requirements. All SWP brands comply with legislative requirements and have been rigorously tested and approved by end users around the world.



MANUFACTURER'S BRANDS

SWP partner with world leading brands to offer the best choice of welding products.





PREMIUM GLASSES

bolle
SAFETY



26 g



RUSH+

- + UPPER PROTECTION
- + CO-INJECTED, ULTRA-FLEX TEMPLES
- + NON-SLIP ADJUSTABLE BRIDGE
- + BI-COLOUR TEMPLES DEPENDING ON VERSION
- + 'PLATINUM' ANTI-FOG & ANTI-SCRATCH COATING

SKU	VERSION	LENS MARKING	FRAME MARKING	COATING
RUSHPPSI	Clear	2C-1.2 1FT KN C E	EN166 FT C E	Anti-scratch/Anti-fog
RUSHPPSF	Smoke	5-3.1 1FT KN C E	EN166 FT C E	Anti-scratch/Anti-fog
RUSHPCSP	CSP	5-1.4 1FT KN C E	EN166 FT C E	Anti-scratch/Anti-fog



21 g



CONTOUR

- + NON-SLIP BRIDGE
- + NON-SLIP TIPGRIP TEMPLES
- + ANTI-STATIC
- + 'PLATINUM' ANTI-FOG & ANTI-SCRATCH COATING

SKU	VERSION	LENS MARKING	FRAME MARKING	COATING
*CONTPSI	Clear	2C-1.2 1FT KN C E	EN166 FT C E	Anti-scratch/Anti-fog
*CONTPSF	Smoke	5-2.5 1FT KN C E	EN166 FT C E	Anti-scratch/Anti-fog
*PSSCONT-C10	CSP	5-1.4 1FT KN C E	EN166 FT C E	Anti-scratch/Anti-fog

All these products are supplied with a microfibre bag



21 g



SILIUM+

- + ULTRA LIGHTWEIGHT FRAME
- + NON-SLIP ADJUSTABLE BRIDGE
- + STRAIGHT, HIGHLY FLEXIBLE ERGONOMIC TEMPLES
- + ALL-ROUND VISION
- + 'PLATINUM' ANTI-FOG & ANTI-SCRATCH COATING

SKU	VERSION	LENS MARKING	FRAME MARKING	COATING
SILPPSI	Clear	2C-1.2 1FT KN C E	EN166 FT C E	Anti-scratch/Anti-fog
SILPPSF	Smoke	5-3.1 1FT KN C E	EN166 FT C E	Anti-scratch/Anti-fog
SILPCSP	CSP	5-1.4 1FT KN C E	EN166 FT C E	Anti-scratch/Anti-fog

All these products are supplied with a microfibre bag

'PLATINUM': Bollé Safety's exclusive anti-fog and anti-scratch coating is applied on both sides of the lens. Resistant to the most extreme work environments, this coating ensures an optimal vision and goes beyond every international standard requirements (EN166 K&N rated).

Choose
to reuse!

Real Reusable
FFP Masks



Storage case



Air Seal can be used for
several days!*

- Foam Seal

Air Plus can be used
for a week!*

- TPE Seal

Developed for long periods of use

- ✓ Top of the range
- ✓ Save money
- ✓ The greener choice

Conform to: EN 149:2001+ A1:2009

Code	Valve	Description	Units / Box
3308	•	FFP2 R D	5
3408	•	FFP3 R D [individually packaged]	5
3705	•	FFP3 R D [individually packaged]	8
3994		FFPak storage case	1

* Usage time is subject to concentrations and breathing resistance, the respirator should be disposed of and replaced if breathing resistance becomes excessive

MOLDEX

MOLDEX

Classic

Disposable Respirator available in FFP1, FFP2 & FFP3



- ✓ Reliable protection against particles
- ✓ ActivForm® - 3D fit for a secure seal
- ✓ DuraMesh® - Mesh structure retains shape
- ✓ Ventex®-Valve reduces heat and humidity
- ✓ Loop strap for easy application and tension distribution
- ✓ Fits securely without the need for a nose clip
- ✓ Conform to: EN 149:2001+ A1:2009

Code	Valve	Description	Units / Box
23601s		Classic FFP1 NR D	20
23651s	•	Classic FFP1 NR D	20

Code	Valve	Description	Units / Box
24001s		Classic FFP2 NR D	20
24051s	•	Classic FFP2 NR D	20
255501	•	Classic FFP3 NR D	20

MOLDEX

Smart

Disposable Respirator available in FFP1, FFP2 & FFP3



- ✓ Reliable protection against particles
- ✓ Soft nose cushion for increased comfort
- ✓ ActivForm® - 3D fit for a secure seal
- ✓ DuraMesh® - Mesh structure retains shape
- ✓ Ventex®-Valve reduces heat and humidity
- ✓ Clip fastening allows the mask to be hung around the neck when not in use
- ✓ Fits securely without the need for a nose clip
- ✓ Conform to: EN 149:2001+ A1:2009

Code	Valve	Description	Units / Box
238001		Smart FFP1 NR D	20
238501	•	Smart FFP1 NR D	20

Code	Valve	Description	Units / Box
248001		Smart FFP2 NR D	20
248501	•	Smart FFP2 NR D	20
250501	•	Smart FFP3 NR D	10

MOLDEX

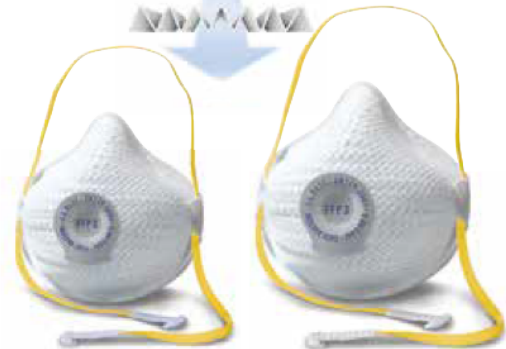
AIR Series

Sized Disposable Respirator available in FFP2 & FFP3

Available in TWO sizes! With AirWave® filter for extremely low breathing resistance

- ✓ Reliable protection against particles
- ✓ Tested to equivalent medical standard, type IIR [non valved only]
- ✓ AirWave® filter for extremely low breathing resistance
- ✓ Available in two sizes for a secure fit
- ✓ ActivForm® - 3D fit for a secure seal
- ✓ DuraMesh® - Mesh structure retains shape
- ✓ Optional Ventex®-Valve reduces heat and humidity
- ✓ Fits securely without the need for a nose clip
- ✓ Conform to: EN 149:2001+ A1:2009

airwave®
filter technology



Code	Valve	Description	Units / Box
310001		FFP2 NR D size M/L	10
315001		FFP2 NR D size S	10
310501	•	FFP2 NR D size M/L	10
315501	•	FFP2 NR D size S	10

Code	Valve	Description	Units / Box
320001		FFP3 NR D size M/L	10
325001		FFP3 NR D size S	10
320501	•	FFP3 NR D size M/L	10
325501	•	FFP3 NR D size S	10

MOLDEX

Bitter Fit Test Kit

Moldex Fit Test Kits allow employers to take charge of their own Fit Testing programme thereby reducing costs and enabling them to carry out Fit Testing whenever necessary (new employee, change of RPE etc). Each Moldex kit is suitable for carrying out multiple tests and comes packaged in its own sturdy case.

Fit Testing Kit contains:

1 x Hood, 6 x 2.5ml bitter sensitivity solution ampoules,
6 x 2.5ml bitter test solution ampoules, 2 x nebulisers,
2 x crushing sleeves, 1 x Fit Test instructions

Code	Description	Units / Box
010301	Fit Test Kit	1
050301	Bitter Sensitivity Solution 2.5ml	6
050401	Bitter Test Solution 2.5ml	6



MOLDEX

Series 7000

Reusable Half Mask



- ✓ Reliable protection against gas, vapour and particles
- ✓ Available in soft TPE or Silicone which remains stable at extreme temperatures
- ✓ Use with EasyLock® filters, easy to install and combine. No adapters or clips needed
- ✓ Easy maintenance and cleaning
- ✓ Lightweight with excellent field of vision
- ✓ Head piece and straps are adjustable for a comfortable and secure fit
- ✓ Conform to: EN 140:1998

Code	Description	Units / Box
7001c1	TPE Mask body [S]	1
7002a1	TPE Mask body [M]	1
7003c1	TPE Mask body [L]	1

Code	Description	Units / Box
7001e1	Silicone Mask body [S]	1
7002e1	Silicone Mask body [M]	1
7003e1	Silicone Mask body [L]	1

MOLDEX

Series 9000

Reusable Full Face Mask



- ✓ Reliable protection against gas, vapour and particles
- ✓ Use with EasyLock® filters, easy to install and combine. No adapters or clips needed
- ✓ Frameless panoramic lens for a large field of vision
- ✓ Scratchproof and solvent-resistant lens protects the eyes
- ✓ Easy maintenance and cleaning
- ✓ Lightweight yet hard wearing and fulfills the stringent requirements of Class 2
- ✓ Conform to: EN 136:1998 CL2

Code	Description	Units / Box
9001c1	Mask body [S]	1
9002e1	Mask body [M]	1
9003e1	Mask body [L]	1

MOLDEX

EasyLock® Particulate Filters

Series 7000 and 9000 particulate filters



EASYLOCK®

- ✓ No adapters
- ✓ Easy handling
- ✓ Simpler logistics - 30% less parts
- ✓ AirWave® for extremely low breathing resistance and high absorption capacity
- ✓ Conform to: EN143:2000 + A1:2006

EasyLock® gas and particulate filters feature bayonet connections that can either be combined or fitted directly onto the Series 7000 and 9000 mask bodies without the need for adapters or filter holders.

Particulate Filters			Particulate Filters		
Code	Description	Units / Box	Code	Description	Units / Box
9020c1	P2 R D	20	9030c1	P3 R D	12
9022c1	P2 R D + ozone	12	9032c1	P3 R D + ozone	12

MOLDEX

EasyLock® Gas Filters

Series 7000 and 9000 gas filters



EASYLOCK®

- ✓ No adapters
- ✓ Easy handling
- ✓ Simpler logistics - 30% less parts
- ✓ Conform to: EN14387:2004 + A1:2008

EasyLock® gas and particulate filters feature bayonet connections that can either be combined or fitted directly onto the Series 7000 and 9000 mask bodies without the need for adapters or filter holders.

Gas Filters			Gas Filters		
Code	Description	Units / Box	Code	Description	Units / Box
9100c1	A1 gas filter	10	9400a1	ABEK1 gas filter	10
9200c1	A2 gas filter	8	9600a1	AX gas filter [single use]	8
9300c1	ABE1 gas filter	10	9800c1	ABEK2 gas filter*	8

*ABEK2 when combined with P2 or P3 particulate filters must only be used with the Series 9000 Full Face Mask and not the Series 7000 Half Mask

MOLDEX

CompactMask

Maintenance Free Half Mask

- ✓ Reliable protection against gas, vapour and particles
- ✓ Maintenance free and ready to use
- ✓ Ultra compact design offers excellent field of vision
- ✓ Push to test valve allows the user to check the fit of the mask
- ✓ Compatible with additional PPE like visors and goggles
- ✓ FlexFit, automatically adjusts to different face shapes
- ✓ Mask body is gentle on the skin
- ✓ Available with the following filters: FFA1P2 R D, FFA2P3 R D, FFABE1P3 R D and FFABEK1P3 R D
- ✓ Conform to: EN 405:2001 + A1:2009



Conforms to: EN 405:2001+ A1:2009

Code	Description	Units / Box
5120c1	FFA1P2 R D	10
5230c1	FFA2P3 R D	10
5330c1	FFABE1P3 R D	10
5430a1	FFABEK1P3 R D	10

MOLDEX

Spark Plugs® Disposable Earplugs

SNR
35
dB



- ✓ Maintain a secure and comfortable fit
- ✓ Bright and colourful
- ✓ Made from soft comfortable PU foam
- ✓ Easy to roll and insert
- ✓ Available uncorded [7801]
- ✓ SNR 35dB
- ✓ Conform to: EN352-2:2002

Code	Description	Pairs / Box
7800en	Spark Plugs® SNR 35	200
7801en	Spark Plugs® Cord SNR 35	200

MOLDEX

Spark Plugs® MoldexStations Earplug Dispenser

SNR
35
dB



- ✓ Maintain a secure and comfortable fit
- ✓ Bright and colourful
- ✓ Plugs remain hygienic as the dispenser mechanism is automatically replaced with every refill
- ✓ Dispenses only one or two earplugs at a time
- ✓ Bracket available separately [706001]
- ✓ 250 or 500 pairs per station
- ✓ SNR 35
- ✓ Conform to: EN352-2:2002

Code	Description	Pairs / Station
7825en	MoldexStation [250] SNR 35	250
7850en	MoldexStation [500] SNR 35	500
7060en	Mounting Bracket	1 unit

MOLDEX

Twisters® Semi Reusable Earplugs

SNR
34
dB



- ✓ Solid handle for easy insertion and removal
- ✓ Hygienic application without rolling
- ✓ Multi curved stem rotates for a custom fit
- ✓ Semi reusable - clean with mild soapy water between use
- ✓ SNR 34dB
- ✓ Conform to: EN 352-2:2002

Code	Description	Pairs / Box
6441en	Twisters® SNR 34	80

MOLDEX

Twister® Trio Reusable Earplugs

SNR
33
dB



- ✓ Solid handle for easy insertion and removal
- ✓ Hygienic application without rolling
- ✓ Multi curved stem rotates for a custom fit
- ✓ Can be washed and reused
- ✓ Comes in a hygienic PocketPak® storage container
- ✓ SNR 33dB
- ✓ Conform to: EN 352-2:2002

Code	Description	Pairs / Box
6451en	Twisters® Trio SNR 33	50

MOLDEX

Banded Earplugs Conform to: EN 352-2:2002

SNR
27
dB

SNR
23
dB



WaveBand 1K

- ✓ Shape mimics the lower jaw, reducing contact and transmission noise to the ear
- ✓ Soft plugs and low band pressure
- ✓ Foam pods are replaceable [682501]
- ✓ SNR 27dB



Jazz Band® 2

- ✓ Sits securely and comfortably under the chin
- ✓ Neck cord with safety release mechanism
- ✓ Soft plugs and low band pressure
- ✓ Foam pods are replaceable [682501]
- ✓ SNR 23dB

Code	Description	Units / Box
6810en	WaveBand 1K SNR 27	8
6700en	Jazz Band® 2 SNR 23	8
6825en	Replaceable pods [50 pairs]	50

MOLDEX

M-Series Earmuffs

SNR
30
dB

SNR
34
dB

SNR
35
dB



- ✓ High quality and robust earmuff
- ✓ Low profile design
- ✓ Lightweight and flexible
- ✓ Low contact pressure
- ✓ Simple on-head size adjustment
- ✓ Soft ear cushions with extra wide ear space for increased fit and comfort
- ✓ Conform to: EN 352-1:2002

Code	Description	Units / Box
6110en	M4 SNR 30 [yellow]	1
6120en	M5 SNR 34 [blue]	1
6130en	M6 SNR 35 [black]	1
6140en	MX7 SNR 31 [blue]	1



MegaMan®

Features & Benefits

- DriTek® lining wicks moisture away from the hand
- EcoTek® biodegradable technology
- Lasts up to 5x longer than conventional nitrile gloves
- Fully textured finish provides excellent wet & dry grip
- Touchscreen compatible
- Food Approved nitrile glove

Thickness - 8.5mil (0.22mm) | Length - 11.0" (280mm) | AQL - 1.5



N66088

PowerForm® Teal

Features & Benefits

- EcoTek® biodegradable technology
- Silicone-free formulation prevents contamination
- Textured finish for excellent wet and dry grip
- Beaded cuff allows for easy donning & removal
- Touchscreen compatible
- Food Approved nitrile glove

Thickness - 8.5mil (0.22mm) | Length - 9.5" (242mm) | AQL - 1.5



N20036

PowerForm® Black

Features & Benefits

- EcoTek® biodegradable technology
- Fully textured surface provides excellent wet & dry grip
- Beaded cuff allows for easy donning & removal
- Pure nitrile prevents latex allergic reaction
- Touchscreen compatible
- Food Approved nitrile glove

Thickness - 5mil (0.13mm) | Length - 9.0" (229mm) | AQL - 1.5



N71688

ORANGE GRIPPER®

Features & Benefits

- Tyre tread pattern for excellent grip
- Chemical resistant
- Powder free
- Food Approved nitrile glove

Thickness - 0.18mm | Length - 240mm | AQL - 1.5



7181

MaxiFlex® is designed and developed as a breathable glove and has become the benchmark for precision handling in dry environments by combining outstanding comfort with class leading durability.

MaxiFlex® ULTIMATE™



Code 42-874
Coating Palm Coated
EN 388 4131A
Sizes 5-12



NOW
TOUCH SCREEN
COMPATIBLE

World's favourite versatile work glove with unrivalled fingertip dexterity

MaxiFlex® ENDURANCE™



Code 42-848
Coating Dotted Palm
EN 388 4131A
Sizes 6-12



NOW
TOUCH SCREEN
COMPATIBLE

Visible orange liner with raised dots for extra cushioning & grip

MaxiFlex® ENDURANCE™



Code 42-847
Coating Driver Dotted Palm
EN 388 4131A
Sizes 6-12



NOW
TOUCH SCREEN
COMPATIBLE

Fully coated glove with dotted palm for exceptional grip and long service life

MaxiFlex® ELITE™



Code 34-274
Coating Palm Coated
EN 388 4121A
Sizes 6-11

Ultra lightweight glove weighing only 14grams. 30% thinner than traditional foam nitrile gloves

KEEPING HOT HANDS
COOL, DRY and PRODUCTIVE



COOLING
TECHNOLOGY



Exclusively available from
Keypoint Industrial Solutions
www.keypoint-uk.co.uk

Keypoint
Protecting you at work

WORKWEAR
& PPE

HIGH VISIBILITY



TWO TONE SOFT SHELL JACKET

HVTT040 S - 4XL

- Lightweight & comfortable
- Windproof
- Fleece backed, breathable fabric
- Full length front zip to neck
- 2 Angled zipped hip pockets
- Zipped right breast pocket
- Retro-reflective segmented tape

EN ISO 20471
Class 3 high visibility
RIS-3279-TOM ISSUE 1
(Orange only) Railway use tested



EN ISO 20471
Class 3 high visibility
RIS-3279-TOM ISSUE 1
(Orange only) Railway use tested

TWO TONE SWEATSHIRT

HVTT020 S - 4XL

- 280 gsm fleece fabric
- 100% polyester
- Anti pill (the fabric has been treated to prevent little balls (or pills) of thread appearing on the surface of the fabric)
- Handwarmer pockets
- Retro-reflective segmented tape
- 2 bands around chest and arms with shoulder accents

TWO TONE HOODY

HVTT025 S - 4XL

EN ISO 20471
Class 3 high visibility
RIS-3279-TOM ISSUE 1
(Orange only) Railway use tested



TWO TONE SHORT SLEEVE POLO SHIRT

HVTT010 S - 4XL

EN ISO 20471
Class 2 high visibility
RIS-3279-TOM ISSUE 1
(Orange only) Railway use tested

- 100% Bird Eye Polyester fabric
- 3 Button placket
- Retro-reflective segmented tape



TWO TONE LONG SLEEVE POLO SHIRT

HVTT015 S - 4XL

EN ISO 20471
Class 3 high visibility
RIS-3279-TOM ISSUE 1
(Orange only) Railway use tested



TWO TONE LONG SLEEVE T-SHIRT

HVTT005 S - 4XL

EN ISO 20471
Class 3 high visibility

- 100% Bird Eye Polyester fabric
- Retro-reflective segmented tape



TWO TONE SHORT SLEEVE T-SHIRT

HVTT001 S - 4XL

EN ISO 20471
Class 2 high visibility



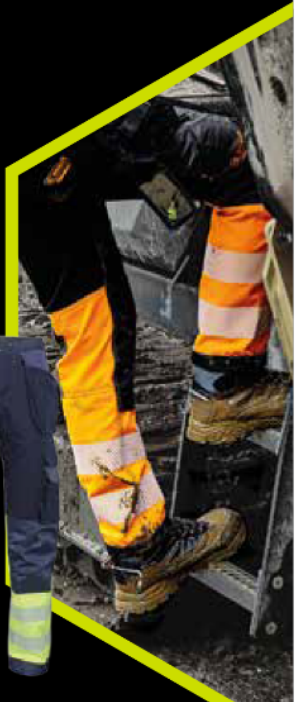
TWO TONE TROUSERS

HVTT080 UK 28" - 44" / EU 44 - 60

EN ISO 20471
Class 1 high visibility
RIS-3279-TOM ISSUE 1
(Orange only) Railway use tested

- 80-20 polyester cotton
- Seven loop belt waistband
- 2 x hip pockets
- 1 x left leg cargo pocket
- 2 x rear pocket
- Knee pad pouch pockets
- Hard wearing and durable
- ID pocket
- Available in regular, short and tall leg fit

EN ISO 20471
Class 1 high visibility
RIS-3279-TOM ISSUE 1
(Orange only) Railway use tested



beeswift.com

HIGH VISIBILITY



PU JACKET

PUJ S - 4XL



- Breathable fabric
- Polyester with PU coating
- Concealed hood
- Full zip front with double storm flap
- Self double yoke back
- Lower pockets with flap
- Elasticated storm cuffs
- Stitched and welded seams
- Reflective material


EN ISO 20471
Class 3 high visibility

EN 343
Class 3 water penetration resistant
Class 1 air permeability

PUT EN ISO 20471 TROUSERS

PUT S - 4XL



- Breathable fabric
- Polyester with PU coating
- Overtrousers with elasticated waist
- Studded ankles
- 3M® retro-reflective tape


EN ISO 20471
Class 2 high visibility

EN 343
Class 3 water penetration resistant
Class 1 air permeability

CTJFL S - 4XL

- PU coated polyester
- Fleece lined
- Concealed hood
- Retro-reflective tape
- Two-way heavy-duty zip front, storm flap and security pocket
- 2 Lower pockets with flaps
- Right hand chest pocket with flap
- Inside breast pocket
- Knitted storm cuffs
- Internal 'wicking' strip
- Fully taped seams

EN ISO 20471
Class 3 high visibility

EN 343
Class 3 water penetration resistant
Class 1 air permeability

FLEECE LINED TRAFFIC JACKET



TJFS S - 4XL

- Heavyweight PU coated polyester
- Nylon lining
- Concealed hood
- Two-way heavyweight zip with storm flap
- 2 lower hip pockets with flaps
- Knitted storm cuffs
- Fully taped seams
- Reversible bodywarmer 'zipout'
- 3M® retro-reflective tape

EN ISO 20471
Class 1 high visibility
RIS-3279-TOM ISSUE 1
(Orange only) Railway use tested

EN 343
Class 3 water penetration resistant
Class 1 air permeability

EN ISO 20471
Class 2 high visibility
(Bodywarmer only)

4 IN 1 TRAFFIC JACKET & BODYWARMER



CONSTRUCTOR TRAFFIC JACKET

CTJENG S - 4XL



- PU coated polyester
- Quilted lining with heavyweight (160gsm) polyester filling
- Concealed hood
- Two-way heavy-duty zip front with storm flap and security pocket
- 2 Lower pockets with flaps
- Inside breast pocket
- Knitted storm cuffs
- Internal 'wicking' strip
- Fully taped seams
- Retro-reflective material

EN ISO 20471
Class 3 high visibility

EN 343
Class 3 water penetration resistant
Class 1 air permeability

EUROPA BOMBER JACKET



EBJ S - 4XL

- 100% polyester with non-breathable coating
- Removable sleeves
- Detachable fleece liner
- Unlined hood with drawcord
- Plastic zip with internal storm flap
- Pen pocket to upper left sleeve
- Exposed ribbed cuffs and waist band
- Mobile phone pocket to right breast
- 2 lower front bellows pockets
- 2 hand warmer pockets
- Retro-reflective tape

EN ISO 20471
Class 3 (with sleeves)
Class 2 (without sleeves)

EN 343
Class 3 water penetration resistant
Class 1 air permeability

ET40/41 S - 4XL

- Hi-vis "Soft Shell" jacket
- Water resistant, windproof
- Fleece backed, breathable fabric
- 2 hand warmer front pockets
- Adjustable cuffs
- 6cm retro-reflective tape
- Retro-reflective piping
- Spiral wound front zip to neck
- Hip drawcord
- Lightweight
- Stylish and comfortable

EN ISO 20471
Class 3 high visibility


ETON SOFT SHELL JACKET



ET45/46 S - 4XL

- Breathable PU coated fabric
- Waterproof jacket fully taped seams
- Zip front closure to neck
- Hook & loop fastening storm flap
- Adjustable cuffs
- 6cm retro-reflective tape
- Retro-reflective piping
- 2 zip fastening front pockets
- Concealed hood
- Hip drawcord

EN ISO 20471
Class 1 high visibility
RIS-3279-TOM ISSUE 1
(Orange only) Railway use tested

EN 343
Class 3 water penetration resistant
Class 3 air permeability

ETON BREATHABLE JACKET



beeswift.com

DISPOSABLE



VIRA-CHEM

VIRA-CHEM DISPOSABLE COVERALL

COCN4013EW S - 2XL



Protects against:

- Chemical & Viral agents
- Bloodborne pathogens
- Sulphuric acid
- Contaminated liquids
- Radioactive Contamination
- For fine dust particles, reduced spray and limited splash
- Anti-static
- 2 way zip front with storm flap
- Elasticated cuffs, ankles, waist and hood
- Microporous fabric 54% polypropylene + 46% polyethylene
- Individually packaged



EN 13034: 2005 + A1: 2009
EN 13982-1: 2005 + A1: 2010



EN 1149-5: 2008
Anti Static - Material performance and design requirements



EN 1073-2: 2002
Protective clothing against radioactive contamination (no rays)



EN 14126: 2003 + AC: 2004
Protective clothing against infective agents (Type 4B, 5B, 6B)

POLYPROP COVERALL

PP45 L - 2XL



- 90gm 56% SMS polypropylene, 44% polyethylene
- Polyethylene laminated + 3 layers of polypropylene
- Ultrasonic taped seams
- Elasticated hood, wrists, ankles and waist
- Zip front with storm flap
- Elasticated thumb loops



NITRILE DISPOSABLE GLOVES POWDER FREE

- CE category III
- CE class I examination glove
- Suitable for catering, beauty and body art sectors
- Free from phthalates/softeners, allergenic latex proteins



NDGPF50 S(7) = XL (10)



EN 374-1



EN 374-5

MICROPOROUS TYPE 3/4/5/6 DISPOSABLE COVERALL

COC40 S - 3XL



- 90gm 56% SMS polypropylene, 44% polyethylene
- Polyethylene laminated + 3 layers of polypropylene
- Ultrasonic taped seams
- Elasticated hood, wrists, ankles and waist
- Zip front with storm flap
- Elasticated thumb loops



EN 13034: 2005 + A1: 2009
EN 13982-1: 2005 + A1: 2010
EN 14605: 2005 + A1: 2009



EN 1149-5: 2008
Anti Static - Material performance and design requirements



EN 1073-2: 2002
Protective clothing against radioactive contamination (no rays)



EN 14126: 2003 + AC: 2004
Protective clothing against infective agents (Type 4B, 5B, 6B)

DISPOSABLE GRIPPER GLOVE

GZNDG10BL S (7) - XXL (11)



- Powder free
- CE category III
- Excellent elasticity
- Textured for added grip



EN 374-1: 2016



EN 374-5: 2016



VINYL DISPOSABLE GLOVES

- 100% synthetic PVC
- Contains no latex or protein
- Ambidextrous
- Easy to pull on beaded cuff
- Available Pre-powdered and Powder free

VDG S(7) = XL (10)



SNOOD CAP

DSCW500 ONE SIZE



HAIRNET

DH ONE SIZE



Detectable



MOB CAP

DMC ONE SIZE



BEARD SNOOD

DBS ONE SIZE



16 INCH (40CM) DISPOSABLE OVERSHOES

DOS ONE SIZE



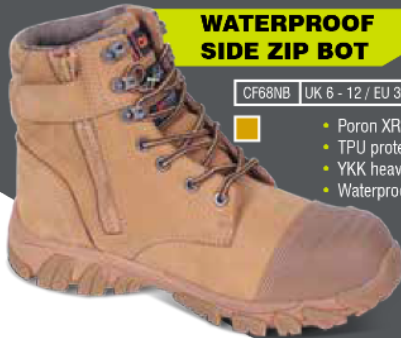
14 INCH (35CM) OVERSLEEVES

D014 ONE SIZE



beeswift.com

FOOTWEAR



WATERPROOF SIDE ZIP BOT

CF68NB UK 6 - 12 / EU 39 - 45

- Poron XRD internal M-Guard
- TPU protective scuff cap
- YKK heavy duty side zip
- Waterproof membrane lining



6 INCH BOOT

CF2BL UK 6 - 13 / EU 39 - 48

- Smooth leather
- Dual density PU



TPU heel support



TRADERS CHUKKA BOOT

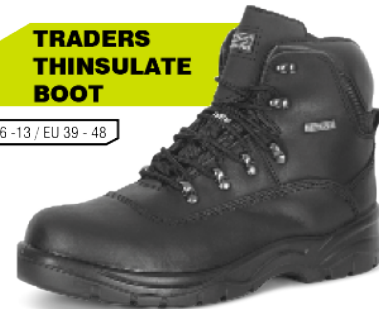
CTF32/33 UK 6 - 12 / EU 39 - 47

- Dual density
- EVA / Rubber



TRADERS THINSULATE BOOT

CTF24BL UK 6 - 13 / EU 39 - 48



TRADERS THINSULATE BOOT

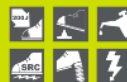
CTF25NB UK 6 - 13 / EU 39 - 48



COMPOSITE HIKER

CF35 UK 3 - 12 / EU 36 - 47

- EVA, TPU and Rubber
- Lightweight



beeswift.com



NATIONAL POWER
LOCAL STRENGTH



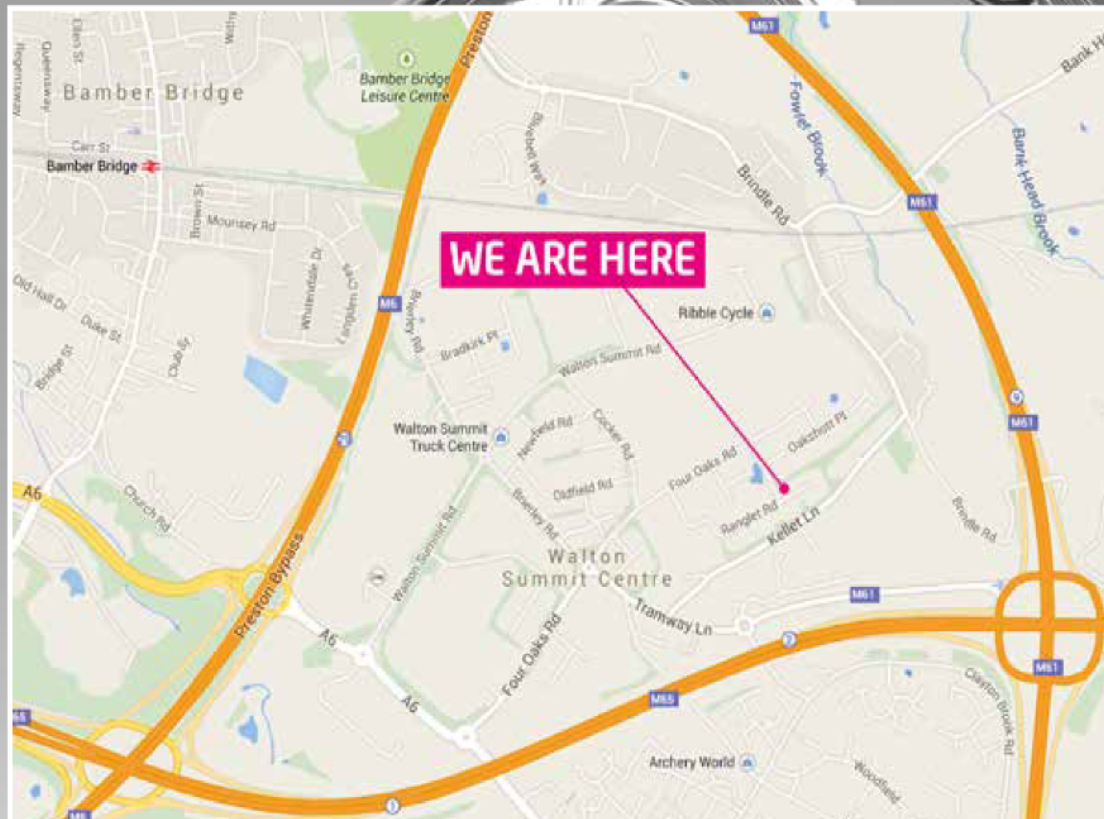
"IADA is the UK's largest group of independent distributors and stockists of all MRO products and associated services across every industrial sector. The Independent Authorised Distributor Alliance currently comprises of 26 independent MRO distributors that offer a first class integrated service throughout the whole of the UK. IADA's and its members offer exceptional levels of service from experienced and knowledgeable personnel. Members also have large stock availability in towns, cities and major industrial areas across the UK and all IADA services centres provide 24/7 support. IADA and its members offer a service that is simply unrivalled.

Combined, IADA has in excess of £20m of inventory held locally across the UK with direct access to over 500 manufacturers and suppliers of world leading brands making IADA the number one choice for service and support.

The knowledge, expertise, technical support and ability to provide solutions is what customers can depend on."

Email: admin@iadaltd.co.uk

Essential Industrial Services Limited are
the leading supplier of bearing and power
transmission products within
the North West of England



T: 01772 321222 F: 01772 322333

E: sales@essentialindustrial.co.uk

W: www.essentialindustrial.co.uk

**Unit 438 Ranglet Road, Walton Summit
Industrial Estate, Bamber Bridge, Preston,
Lancashire, PR5 8AR**



Essential
INDUSTRIAL SERVICES LTD